




 **Primary 5 Science (Term 2) - St Nicholas** 

Add Questions **Assign** **Settings** **Review**

 Duplicate  Print  Delete

 **Assign Test**

Test Introduction

[+ Add Introduction](#)

64 Questions (72 Points)

Question Bank: 9,275 Questions 

Test Questions **0 Test Assignments**

Question 1 Primary 5 Science » Primary 5 Science (Term 2) 2 pts

For each question, four options are given. One of them is the correct answer. Make your choice (A, B, C or D) and choose the correct answer. (28 x 2 marks = 56 marks)

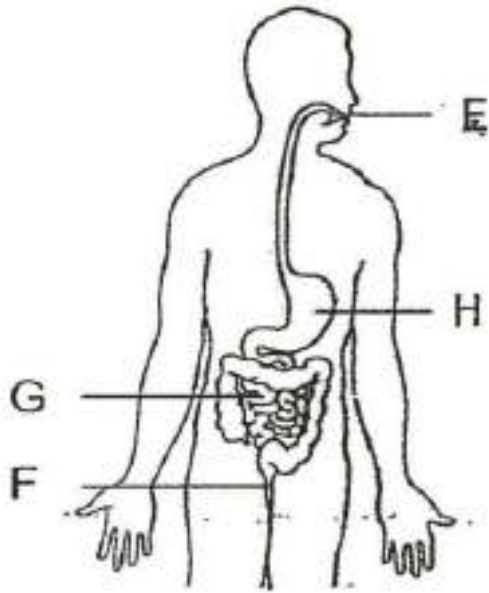
Study the table below.

Function	Part of the human digestive system			
	E	F	G	H
Digestion takes place here	✓	✓		✓
Digested food is absorbed into the bloodstream		✓		
Solid waste is passed out of the body			✓	

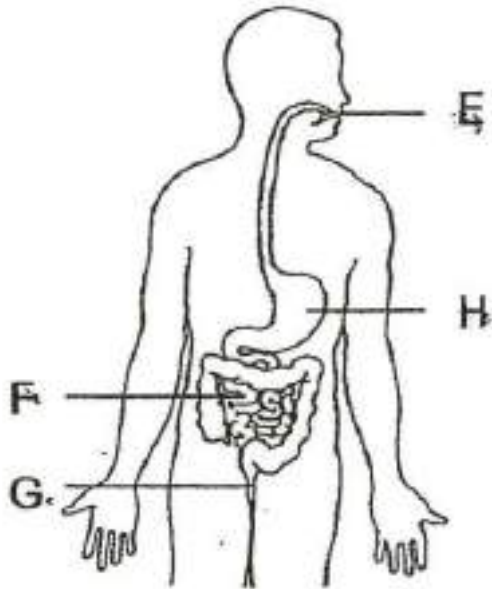
Key
✓ present

Which one of the following correctly shows the parts labeled E, F, G and H?

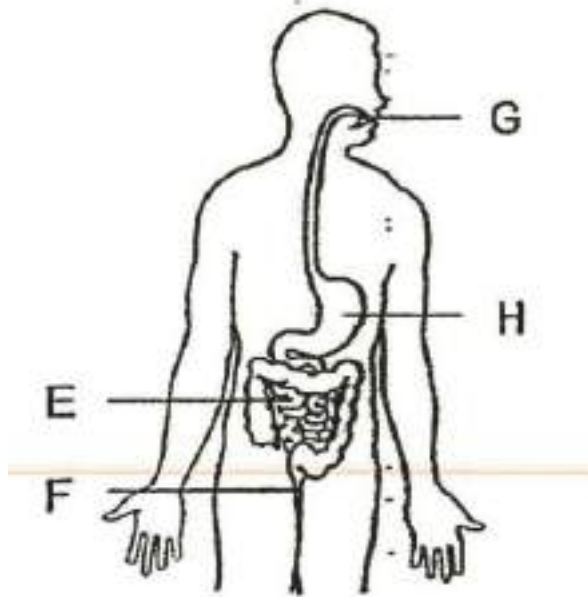
A)



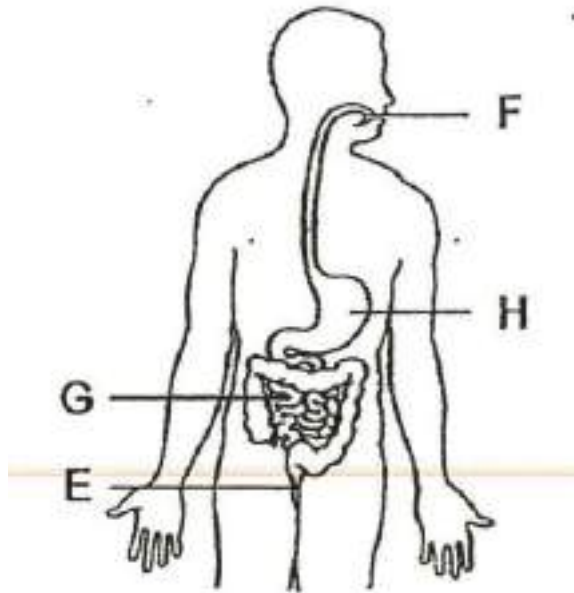
✓ B)



c)



D)



Question Type: Multiple Choice
Randomize Answers: No
Date Added: Thu 5th Aug 2021
Last Modified: N/A
QID#: 28,628,805

[Answers](#) | [Edit](#) | [Duplicate](#) | [Used In](#) | [Reorder](#)

[Remove From Test](#)

Question 2

Primary 5 Science » Primary 5 Science (Term 2)

2 pts

Which one of the following comparisons between the human circulatory system and the plant transport system is correct?

A)

Human circulatory system	Plant transport system
does not transport gases	transports gases

B)	Human circulatory system substances moves in two directions	Plant transport system substances moves in one direction
✓ C)	Human circulatory system has an organ to pump substances around the body	Plant transport system does not have an organ to pump substances around the plant
D)	Human circulatory system has only one tube to carry substances around the body	Plant transport system has one tube to carry food and one tube to carry water

Question Type: Multiple Choice
Randomize Answers: No
Date Added: Thu 5th Aug 2021
Last Modified: N/A
QID#: 28,628,780

[Answers](#) | [Edit](#) | [Duplicate](#) | [Used In](#) | [Reorder](#)

[Remove From Test](#)

Question 3

Primary 5 Science » Primary 5 Science (Term 2)

2 pts

What is generally common among birds and fish?

- A) They can swim.
- ✓ B) They can reproduce by laying eggs.
- C) They have the same outer covering.
- D) They have the same breathing method.

Question Type: Multiple Choice
Randomize Answers: No
Date Added: Thu 5th Aug 2021
Last Modified: N/A
QID#: 28,628,781

[Answers](#) | [Edit](#) | [Duplicate](#) | [Used In](#) | [Reorder](#)

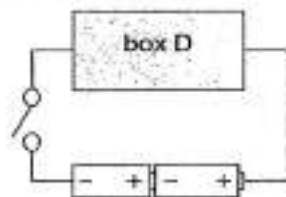
[Remove From Test](#)

Question 4

Primary 5 Science » Primary 5 Science (Term 2)

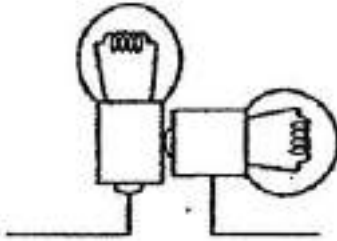
2 pts

Callista set up the circuit as shown below. She arranged two identical bulbs in box D. When she closed the circuit, both bulbs lit up.

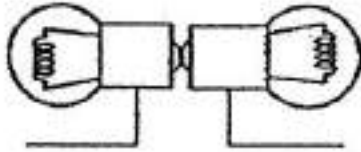


Which one of the following arrangements of bulbs in box D is not possible?

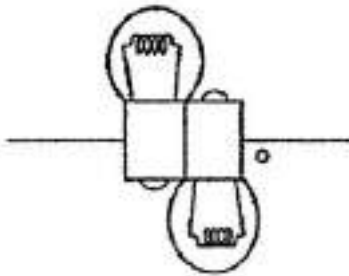
A)



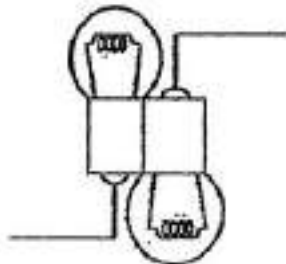
B)



✓ C)



D)



Question Type: Multiple Choice
Randomize Answers: No
Date Added: Thu 5th Aug 2021
Last Modified: N/A
QID#: 28,628,782

[Answers](#) | [Edit](#) | [Duplicate](#) | [Used In](#) | [Reorder](#)

[Remove From Test](#)

Question 5

Primary 5 Science » Primary 5 Science (Term 2)

2 pts

Arron put a plant in a beaker of blue-coloured water for 24 hours. The diagram below shows a section of the stem after 24 hours.



Arron observed that tube S turned blue but not tube R. Which of the following is a possible explanation for this observation?

- A) Tube S transports food from the roots to all parts of the plant.
- ✓ B) Tube S transports water from the roots to all parts of the plant.
- C) Tube S transports food from the leaves to all parts of the plant.
- D) Tube S transports water from the leaves to all parts of the plant.

Question Type: Multiple Choice
Randomize Answers: No
Date Added: Thu 5th Aug 2021
Last Modified: N/A
QID#: 28,628,783

[Answers](#) | [Edit](#) | [Duplicate](#) | [Used In](#) | [Reorder](#)

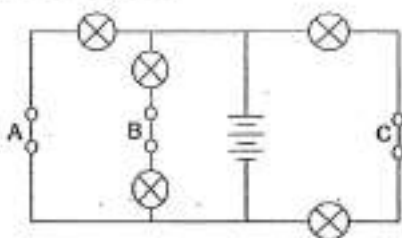
[Remove From Test](#)

Question 6

Primary 5 Science » Primary 5 Science (Term 2)

2 pts

Firdaus set up a circuit as shown below. All the five identical bulbs lit up when all switches A, B and C were closed.



Which of the following switch(es) should be opened in order to have the least number of bulbs lit?

- A) B only
- B) C only
- C) A and B only
- ✓ D) B and C only

Question Type: Multiple Choice
Randomize Answers: No
Date Added: Thu 5th Aug 2021
Last Modified: N/A
QID#: 28,628,784

Question 7

Primary 5 Science » Primary 5 Science (Term 2)

2 pts

An outer ring of a stem was removed from a plant as shown below. As a result, the tubes carrying food and water were removed.



It was observed that part W of the plant grew bigger after one week.

Which of the following statement(s) best explains this observation?

- A Food at Z is transported to W.
- B Food made by X is transported to W.
- C Food made by Y is transported to W.
- D W absorbs water and becomes bigger.

- ✓ A) B only
- B) A and D only
- C) B and C only
- D) C and D only

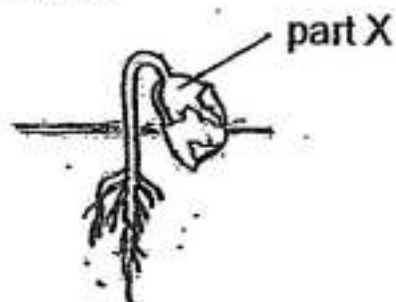
Question Type: Multiple Choice
Randomize Answers: No
Date Added: Thu 5th Aug 2021
Last Modified: N/A
QID#: 28,628,785

Question 8

Primary 5 Science » Primary 5 Science (Term 2)

2 pts

Study the diagram shown below.



What is the function of part X?

- A) It provides air for the young plant.

- ✓ B) It provides food for the young plant.
- C) It provides water for the young plant.
- D) It provides protection for the young plant.

Question Type: Multiple Choice
Randomize Answers: No
Date Added: Thu 5th Aug 2021
Last Modified: N/A
QID#: 28,628,786

[Answers](#) |
 [Edit](#) |
 [Duplicate](#) |
 [Used In](#) |
 [Reorder](#)

[Remove From Test](#)

Question 9

Primary 5 Science » Primary 5 Science (Term 2)

2 pts

The diagram below shows a car.



Part X helps to keep the rain away and allows the driver of the car to see the road ahead clearly.

Which of the following best represents the properties of part X?

- ✓ A)

Waterproof	Allows light to pass through
yes	yes
- B)

Waterproof	Allows light to pass through
yes	no
- C)

Waterproof	Allows light to pass through
no	yes
- D)

Waterproof	Allows light to pass through
no	no

Question Type: Multiple Choice
Randomize Answers: No
Date Added: Thu 5th Aug 2021
Last Modified: N/A
QID#: 28,628,787

[Answers](#) |
 [Edit](#) |
 [Duplicate](#) |
 [Used In](#) |
 [Reorder](#)

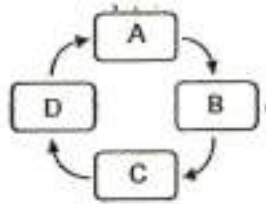
[Remove From Test](#)

Question 10

Primary 5 Science » Primary 5 Science (Term 2)

2 pts

A, B, C and D represents the different stages in the life cycle of a butterfly



If B represents the adult stage of the butterfly, what stage does D represent?

- A) Egg
- ✓ B) Larva
- C) Pupa
- D) Nymph

Question Type: Multiple Choice
 Randomize Answers: No
 Date Added: Thu 5th Aug 2021
 Last Modified: N/A
 QID#: 28,628,788

[Answers](#) | [Edit](#) | [Duplicate](#) | [Used In](#) | [Reorder](#)

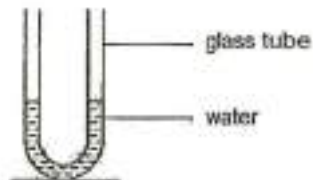
[Remove From Test](#)

Question 11

Primary 5 Science » Primary 5 Science (Term 2)

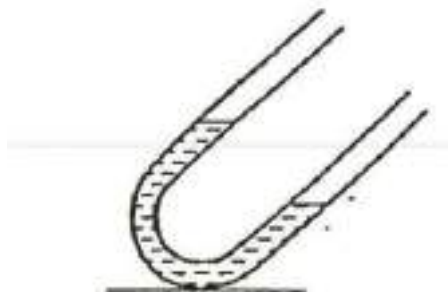
2 pts

Study the diagram below.

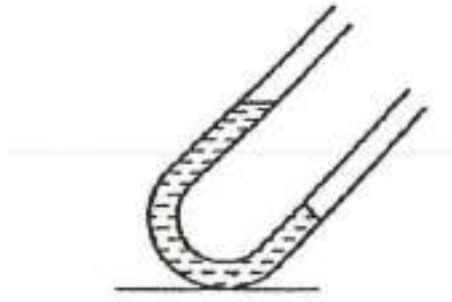


Which one of the following diagrams shows how the water in the tube would look like when the glass tube is tilted?

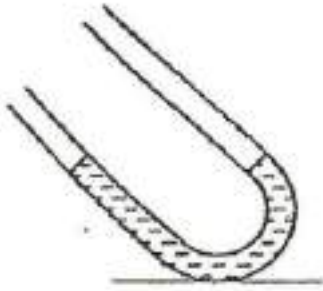
A)



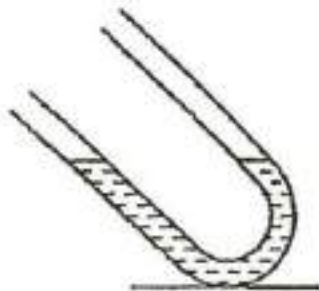
B)



C)



✓ D)



Question Type: Multiple Choice
Randomize Answers: No
Date Added: Thu 5th Aug 2021
Last Modified: N/A
QID#: 28,628,789

[Answers](#) | [Edit](#) | [Duplicate](#) | [Used In](#) | [Reorder](#)

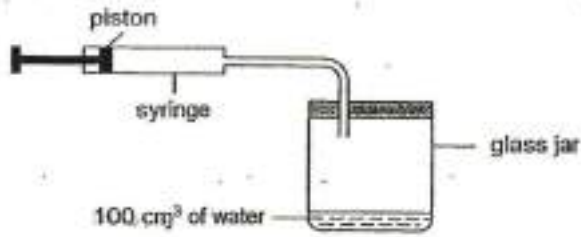
[Remove From Test](#)

Question 12

Primary 5 Science » Primary 5 Science (Term 2)

2 pts

The diagram below shows a syringe connected to a glass jar. The capacity of the glass jar is 500 cm^3 .



When the piston is pushed in completely, another 90 cm^3 of air is forced into the jar. What is the volume of air in the jar?

- A) 90 cm^3
- ✓ B) 400 cm^3
- C) 490 cm^3
- D) 500 cm^3

Question Type: Multiple Choice
 Randomize Answers: No
 Date Added: Thu 5th Aug 2021
 Last Modified: N/A
 QID#: 28,628,790

[Answers](#) | [Edit](#) | [Duplicate](#) | [Used In](#) | [Reorder](#)

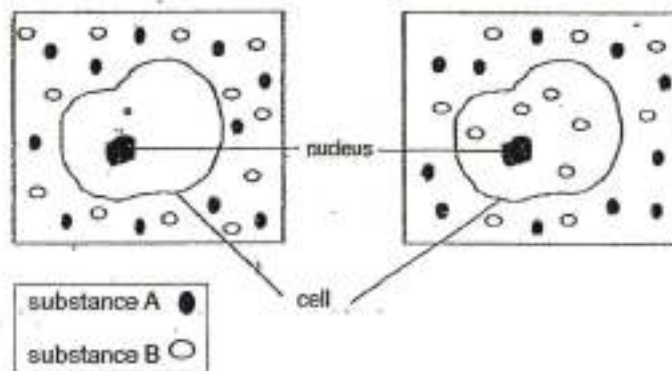
[Remove From Test](#)

Question 13

Primary 5 Science » Primary 5 Science (Term 2)

2 pts

The diagram below shows movement of substances A and B in a cell.



Which one of the following best explains the above observation?

- A) The cell membrane of the cell only allows substance A to pass through.
- ✓ B) The cell membrane of the cell only allows substance B to pass through.
- C) The cell membrane of the cell allows substance A and B to pass through.
- D) The cell membrane of the cell does not allow any substances to pass through.

Question Type: Multiple Choice
Randomize Answers: No
Date Added: Thu 5th Aug 2021
Last Modified: N/A
QID#: 28,628,791

[Answers](#) | [Edit](#) | [Duplicate](#) | [Used In](#) | [Reorder](#)

[Remove From Test](#)

Question 14

Primary 5 Science » Primary 5 Science (Term 2)

2 pts

Study the diagram below.



organism W



organism S

Which of the following statement(s) about the organisms is/are true?

- A Organism W has more cells than organism S.
- B Both organisms have cells that carry out different functions.
- C Organism W is bigger than organism S because its cells are much larger.

- A) B only
- B) A and C only
- ✓ C) A and B only
- D) B and C only

Question Type: Multiple Choice
Randomize Answers: No
Date Added: Thu 5th Aug 2021
Last Modified: N/A
QID#: 28,628,792

[Answers](#) | [Edit](#) | [Duplicate](#) | [Used In](#) | [Reorder](#)

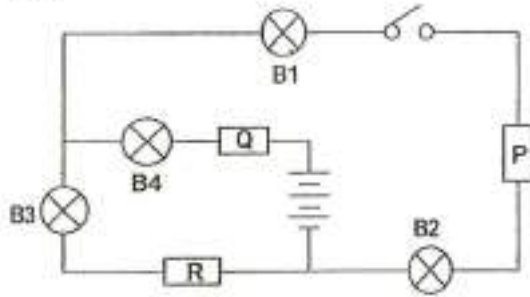
[Remove From Test](#)

Question 15

Primary 5 Science » Primary 5 Science (Term 2)

2 pts

Three rods P, Q and R each made of a different material were connected in a circuit as shown below.



The table below shows the results when the switch was closed.

Did the bulb light up?			
B1	B2	B3	B4
yes	yes	no	yes

Which of the following describes P, Q and R correctly?

- A)

P	Q	R
conductor	insulator	conductor
- ✓ B)

P	Q	R
conductor	conductor	insulator
- C)

P	Q	R
insulator	insulator	conductor
- D)

P	Q	R
insulator	conductor	insulator

Question Type: Multiple Choice
Randomize Answers: No
Date Added: Thu 5th Aug 2021
Last Modified: N/A
QID#: 28,628,793

[Answers](#) | [Edit](#) | [Duplicate](#) | [Used In](#) | [Reorder](#)

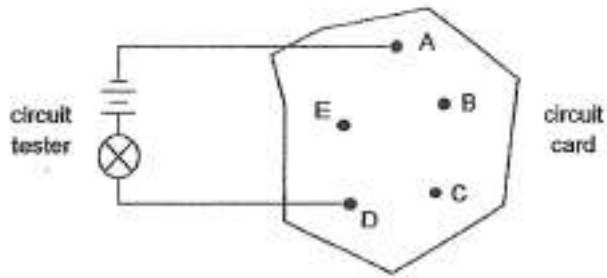
[Remove From Test](#)

Question 16

Primary 5 Science » Primary 5 Science (Term 2)

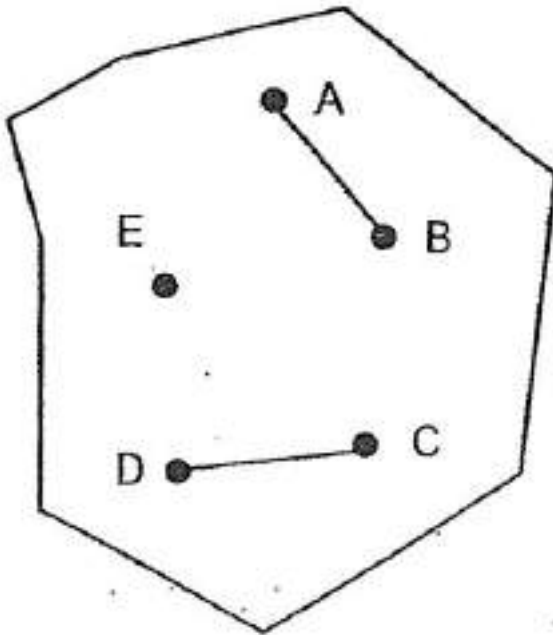
2 pts

Chee Hsiang was given a circuit card and a circuit tester as shown below. When one end of the circuit tester was clipped onto A and the other end onto D, the bulb lit up.

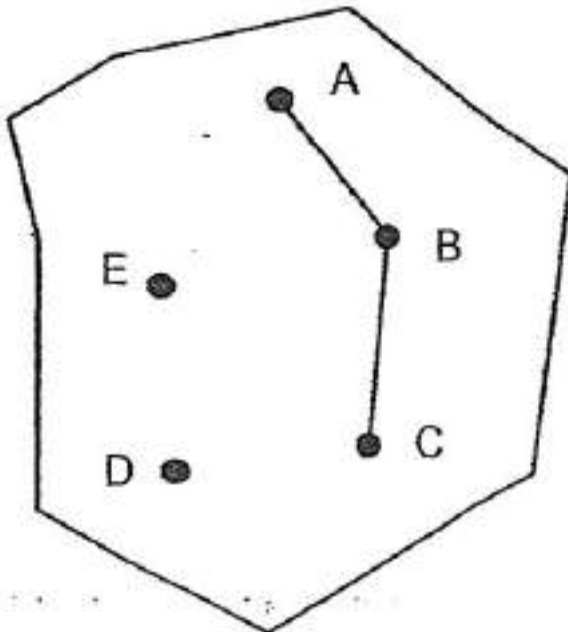


Which one of following connections correctly shows how the wires are connected on the reverse side of the circuit card?

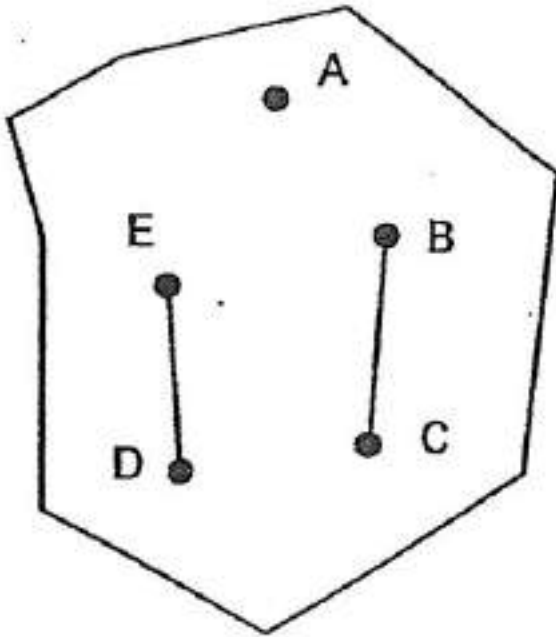
A)



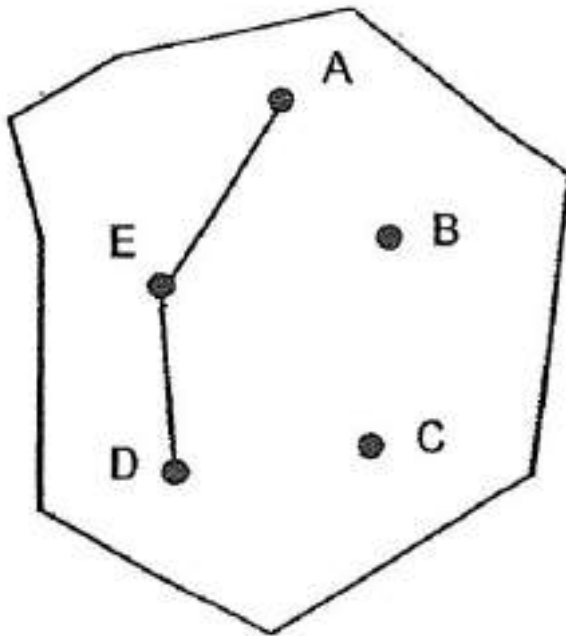
B)



C)



✓ D)



Question Type: Multiple Choice
Randomize Answers: No
Date Added: Thu 5th Aug 2021
Last Modified: N/A
QID#: 28,628,794

[Answers](#) | [Edit](#) | [Duplicate](#) | [Used In](#) | [Reorder](#)

[Remove From Test](#)

Question 17

Primary 5 Science » Primary 5 Science (Term 2)

2 pts

The table below lists the parts of a cell. Each tick (✓) represents the part of a cell that cells G, H and J have.

Part of the cell	Cell G	Cell H	Cell J
Cell Membrane	✓	✓	✓
Cell Wall	✓		✓
Chloroplasts	✓		
Nucleus	✓	✓	✓

Where are cells G, H and J likely to be found?

- A)

Cell G	Cell H	Cell J
cheek	leaf	root
- B)

Cell G	Cell H	Cell J
root	cheek	leaf
- C)

Cell G	Cell H	Cell J
leaf	root	cheek
- ✓ D)

Cell G	Cell H	Cell J
leaf	cheek	root

Question Type: Multiple Choice
 Randomize Answers: No
 Date Added: Thu 5th Aug 2021
 Last Modified: N/A
 QID#: 28,628,795

[Answers](#) | [Edit](#) | [Duplicate](#) | [Used In](#) | [Reorder](#)

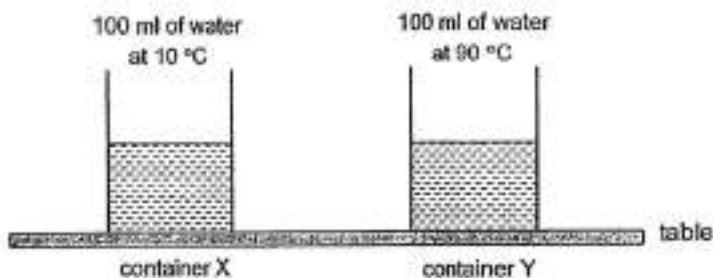
[Remove From Test](#)

Question 18

Primary 5 Science » Primary 5 Science (Term 2)

2 pts

The set-ups below show two similar containers with water at different temperatures. Both containers were left on the table for 30 minutes.



Which one of the following table shows what happened to the water in the containers after 30 minutes?

- ✓ A)

	Gained heat	Lost heat	Temperature
Water in container X	✓		Increased
Water in container Y		✓	Decreased

B)

	Gained heat	Lost heat	Temperature
Water in container X	✓		Increased
Water in container Y	✓		Decreased

C)

	Gained heat	Lost heat	Temperature
Water in container X		✓	Increased
Water in container Y		✓	Increased

D)

	Gained heat	Lost heat	Temperature
Water in container X		✓	Decreased
Water in container Y	✓		Decreased

Question Type: Multiple Choice
 Randomize Answers: No
 Date Added: Thu 5th Aug 2021
 Last Modified: N/A
 QID#: 28,628,796

[Answers](#) | [Edit](#) | [Duplicate](#) | [Used In](#) | [Reorder](#)

[Remove From Test](#)

Question 19

Primary 5 Science » Primary 5 Science (Term 2)

2 pts

The diagram below shows some fruit flies kept in a sealed jar.



Which of the following correctly shows the changes in the amount of gases in the jar after five hours?

- A)

Carbon Dioxide	Oxygen	Nitrogen	Water Vapour
decrease	increase	decrease	remain the same
- B)

Carbon Dioxide	Oxygen	Nitrogen	Water Vapour
increase	decrease	remain the same	decrease
- C)

Carbon Dioxide	Oxygen	Nitrogen	Water Vapour
decrease	increase	increase	remain the same
- ✓ D)

Carbon Dioxide	Oxygen	Nitrogen	Water Vapour
increase	decrease	remain the same	increase

Question Type: Multiple Choice
Randomize Answers: No
Date Added: Thu 5th Aug 2021
Last Modified: N/A
QID#: 28,628,797

[Answers](#) | [Edit](#) | [Duplicate](#) | [Used In](#) | [Reorder](#)

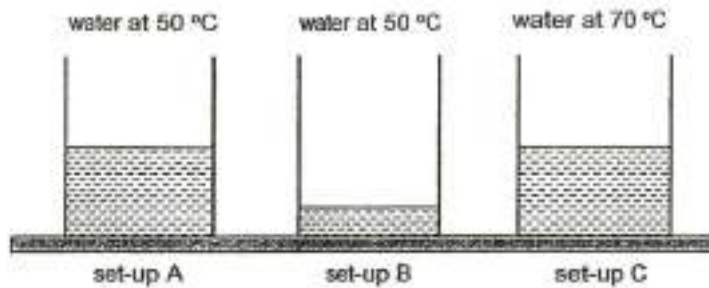
[Remove From Test](#)

Question 20

Primary 5 Science » Primary 5 Science (Term 2)

2 pts

Study the set-ups below.



Which one of the following shows the correct order of increasing amount of heat in the water for set-ups A, B and C?

- ✓ A)

Least Amount of Heat	Most Amount of Heat
B	A C
- B)

Least Amount of Heat	Most Amount of Heat
C	A B
- C)

Least Amount of Heat	Most Amount of Heat
C	B A
- D)

Least Amount of Heat	Most Amount of Heat
A	B C

Question Type: Multiple Choice
Randomize Answers: No
Date Added: Thu 5th Aug 2021
Last Modified: N/A
QID#: 28,628,798

[Answers](#) | [Edit](#) | [Duplicate](#) | [Used In](#) | [Reorder](#)

[Remove From Test](#)

Question 21

Primary 5 Science » Primary 5 Science (Term 2)

2 pts

Study the table below.

Metal	Temperature before heating (°C)	Temperature after heating (°C)
S	20	90
T	24	79
U	21	87
V	25	69

Which metal S, T, U or V is most suitable for making the base of a frying pan?

- ✓ A) S
- B) T
- C) U
- D) V

Question Type: Multiple Choice
Randomize Answers: No
Date Added: Thu 5th Aug 2021
Last Modified: N/A
QID#: 28,628,799

[Answers](#) | [Edit](#) | [Duplicate](#) | [Used In](#) | [Reorder](#)

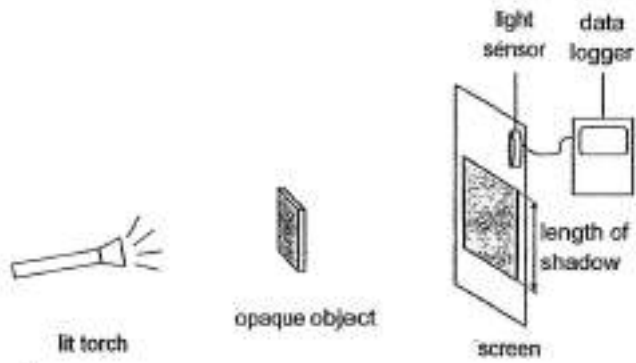
[Remove From Test](#)

Question 22

Primary 5 Science » Primary 5 Science (Term 2)

2 pts

Najmi used the set-up below to conduct an experiment on shadows in a dark room. He used a light sensor to measure the amount of light on the screen.



He changed the position of one of the items in the set-up and recorded his observations for each position as follows.

Length of shadow (cm)	Light sensor reading (units)
20	120
17	170
11	260
9	300

What change did Najmi make?

- A) Object was moved towards the torch.
- B) Torch was moved towards the object.
- ✓ C) Screen was moved towards the object.
- D) Object was moved away from the screen.

Question Type: Multiple Choice
Randomize Answers: No
Date Added: Thu 5th Aug 2021
Last Modified: N/A
QID#: 28,628,800

[Answers](#) | [Edit](#) | [Duplicate](#) | [Used In](#) | [Reorder](#)

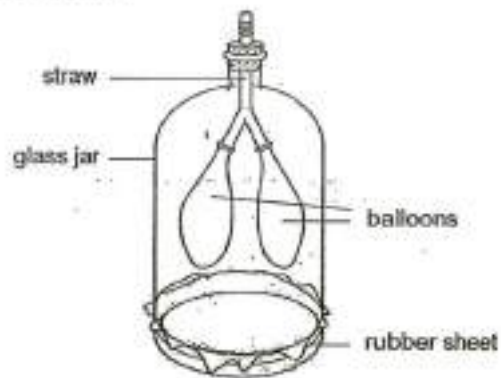
[Remove From Test](#)

Question 23

Primary 5 Science » Primary 5 Science (Term 2)

2 pts

Study the lung-model below.



Which one of the following correctly matches the parts of the lung-model to the human respiratory system?

- A)

Balloons	Rubber Sheet	Straw
heart	diaphragm	gullet
- B)

Balloons	Rubber Sheet	Straw
lungs	heart	gullet
- ✓ C)

Balloons	Rubber Sheet	Straw
lungs	diaphragm	windpipe
- D)

Balloons	Rubber Sheet	Straw
diaphragm	lungs	windpipe

Question Type: Multiple Choice
Randomize Answers: No
Date Added: Thu 5th Aug 2021
Last Modified: N/A
QID#: 28,628,801

[Answers](#) | [Edit](#) | [Duplicate](#) | [Used In](#) | [Reorder](#)

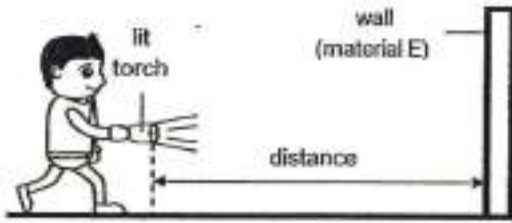
[Remove From Test](#)

Question 24

Primary 5 Science » Primary 5 Science (Term 2)

2 pts

Cheng Yee wanted to find out which material could reflect the most light. He conducted the following experiment in a dark room.



He shone the torch onto material E and walked towards it. When he could see the material clearly, he stopped and recorded the distance between the torch and the material. He repeated this experiment using materials F, G and H and recorded the results in the table below.

Material	E	F	G	H
Distance (cm)	80	120	160	200

Which one of the following statements is correct?

- A) Material E is better at reflecting light than Material H.
- ✓ B) Material G is better at reflecting light than Material F.
- C) Material H is poorer at reflecting light than Material E.
- D) Material F is poorer at reflecting light than Material E.

Question Type: Multiple Choice
 Randomize Answers: No
 Date Added: Thu 5th Aug 2021
 Last Modified: N/A
 QID#: 28,628,802

[Answers](#) | [Edit](#) | [Duplicate](#) | [Used In](#) | [Reorder](#)

[Remove From Test](#)

Question 25

Primary 5 Science » Primary 5 Science (Term 2)

2 pts

Siti tried to attract some steel clips using a nail which had been stroked by a bar magnet. She observed that no steel clips were attracted. Which of the following could be possible reason(s) for this observation?

- A The nail was made of copper.
- B The nail was stroked by the south pole of the bar magnet only.
- C The nail was stroked many times in the same direction with the same pole of the bar magnet each time.
- D The nail was stroked many times in different directions with the same pole of the bar magnet each time.

- A) A only
- B) B only
- ✓ C) A and D only
- D) B and C only

Question Type: Multiple Choice

Randomize Answers: No
 Date Added: Thu 5th Aug 2021
 Last Modified: N/A
 QID#: 28,628,803

Answers | Edit | Duplicate | Used In | Reorder

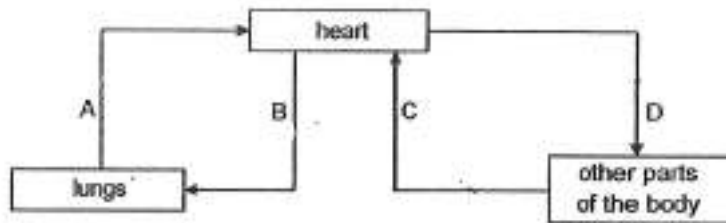
Remove From Test

Question 26

Primary 5 Science » Primary 5 Science (Term 2)

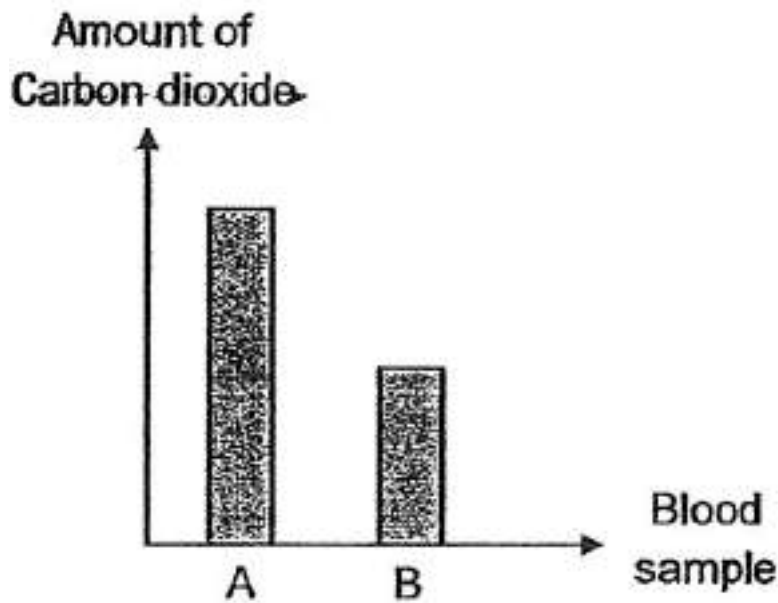
2 pts

The diagram shows the direction of blood flow in some parts of the body.

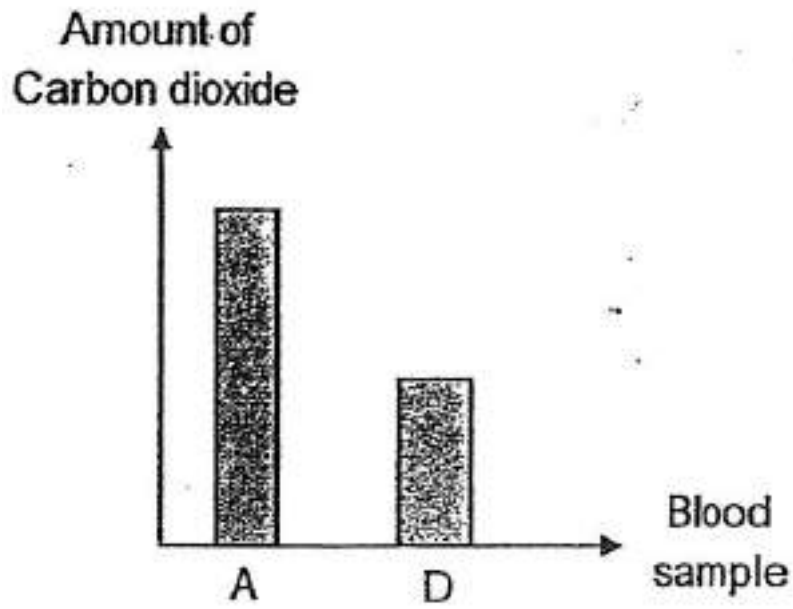


Which chart shows the correct comparisons of the amount of carbon dioxide in the blood samples?

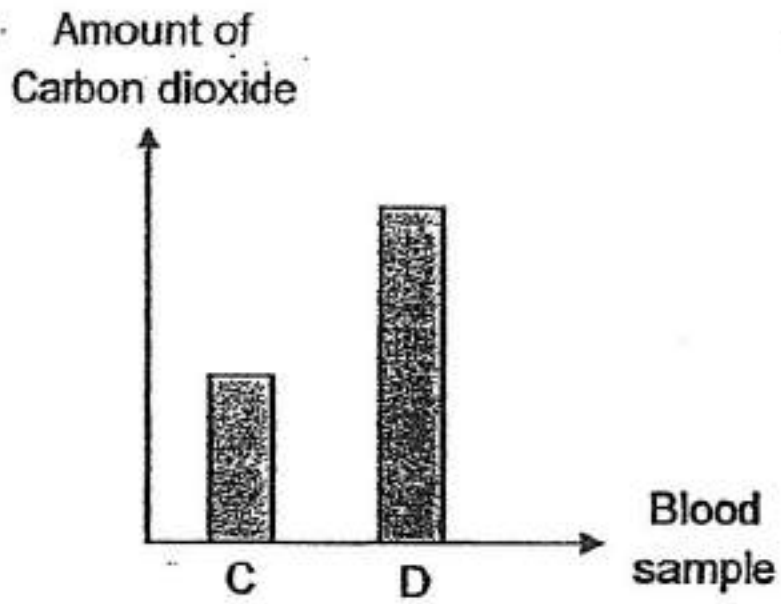
A)



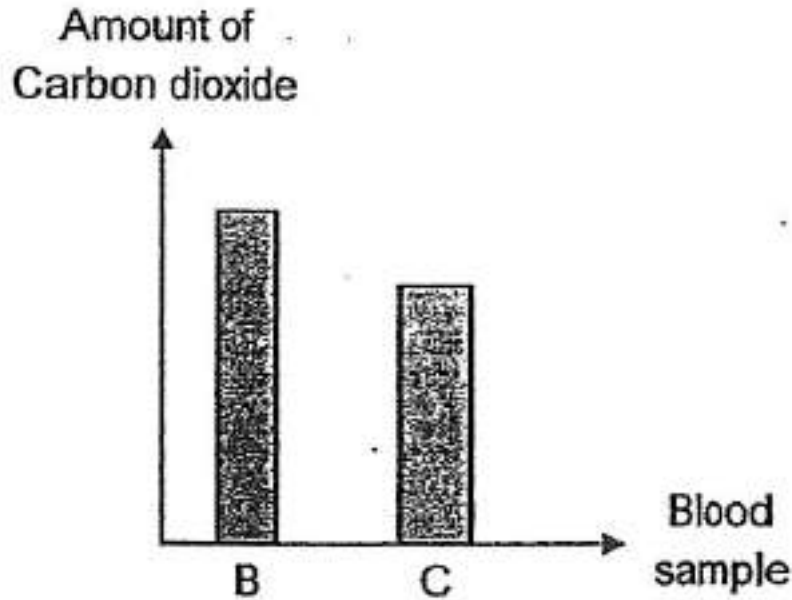
B)



c)



✓ D)



Question Type: Multiple Choice
 Randomize Answers: No
 Date Added: Thu 5th Aug 2021
 Last Modified: N/A
 QID#: 28,628,804

[Answers](#) |
 [Edit](#) |
 [Duplicate](#) |
 [Used In](#) |
 [Reorder](#)

[Remove From Test](#)

Question 27

Primary 5 Science » Primary 5 Science (Term 2)

2 pts

The table below shows Steve's pulse rate when he carries out three different activities.

Activity	Pulse rate per minute
E	60
F	75
G	105

Which of the following is likely to represent the three activities correctly?

- ✓ A)

E	F	G
sleeping	strolling in the park	playing basketball
- B)

E	F	G
playing hockey	strolling in the park	sleeping
- C)

E	F	G
reading a book	playing badminton	strolling in the park
- D)

E	F	G
strolling in the park	playing netball	reading a book

Question Type: Multiple Choice
Randomize Answers: No
Date Added: Thu 5th Aug 2021
Last Modified: N/A
QID#: 28,628,806

[Answers](#) | [Edit](#) | [Duplicate](#) | [Used In](#) | [Reorder](#)

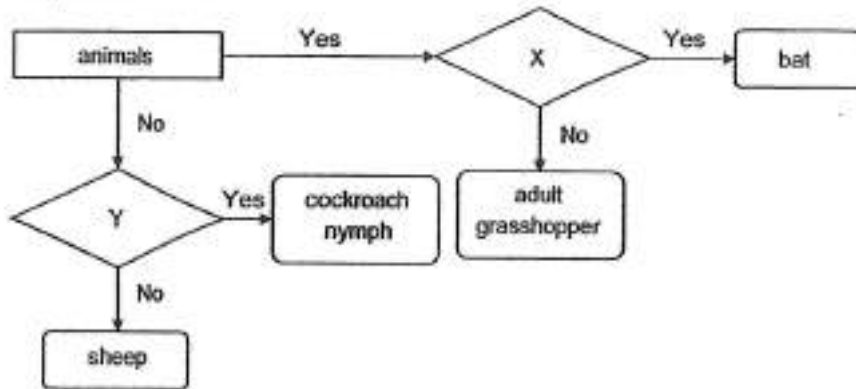
[Remove From Test](#)

Question 28

Primary 5 Science » Primary 5 Science (Term 2)

2 pts

Study the chart below.



Which of the following shows the characteristics represented by X and Y?

- ✓ A)

X	Y
lays eggs	has 3 body parts

- B)

X	Y
breathes through lungs	has 3 body parts

- C)

X	Y
has 6 legs	gives birth to its young alive

- D)

X	Y
has feathers	gives birth to its young alive

Question Type: Multiple Choice
Randomize Answers: No
Date Added: Thu 5th Aug 2021
Last Modified: N/A
QID#: 28,628,807

[Answers](#) | [Edit](#) | [Duplicate](#) | [Used In](#) | [Reorder](#)

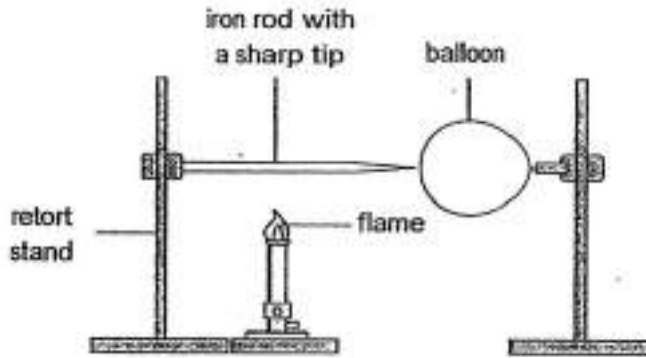
[Remove From Test](#)

Question 29

Primary 5 Science » Primary 5 Science (Term 2)

0 pts

Study the set-up below.



The iron rod was heated for 5 minutes and the balloon burst. Explain why the balloon burst. (1 mark)

This question is designed for extended answers that parent/ teacher will have to assign and guide child to attempt after the test has been completed.

Grading: This question type is not graded on this system and will not affect the final score as it was designed in such a way that it requires manual assistance.

Question Type: Essay
Date Added: Thu 5th Aug 2021
Last Modified: N/A
QID#: 28,628,813

Correctly answered feedback

When the iron rod gained heat from the flame and expanded.

Incorrectly answered feedback

When the iron rod gained heat from the flame and expanded.

[Answers](#) | [Edit](#) | [Duplicate](#) | [Used In](#) | [Reorder](#)

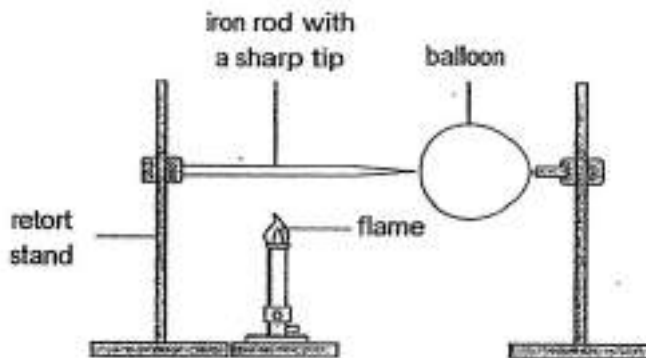
[Remove From Test](#)

Question 30

Primary 5 Science » Primary 5 Science (Term 2)

0 pts

Study the set-up below.



The iron rod was changed to a ceramic rod and the experiment was repeated. After 5 minutes, the balloon did not burst. Explain why. (2 marks)

This question is designed for extended answers that parent/ teacher will have to assign and guide child to attempt after the test has been completed.

Grading: This question type is not graded on this system and will not affect the final score as it was designed in such a way that it requires manual assistance.

Question Type: Essay
Date Added: Thu 5th Aug 2021
Last Modified: N/A
QID#: 28,628,817

Correctly answered feedback

The ceramic rod is a poorer conductor of heat than the iron rod so it does not gain as much heat and expand to touch and burst the balloon.

Incorrectly answered feedback

The ceramic rod is a poorer conductor of heat than the iron rod so it does not gain as much heat and expand to touch and burst the balloon.

[Answers](#) | [Edit](#) | [Duplicate](#) | [Used In](#) | [Reorder](#)

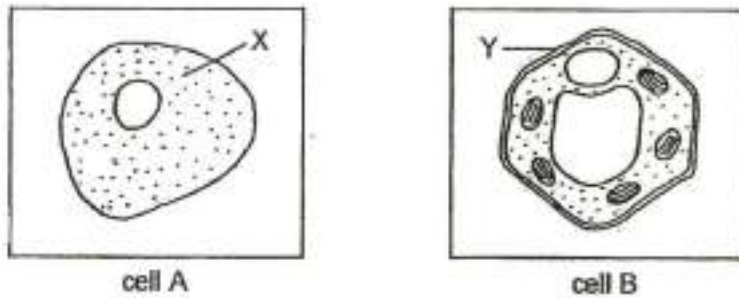
[Remove From Test](#)

Question 31

Primary 5 Science » Primary 5 Science (Term 2)

0 pts

The diagram below shows an animal cell and a plant cell.



State the function of part X of cell A.

This question is designed for extended answers that parent/ teacher will have to assign and guide child to attempt after the test has been completed.

Grading: This question type is not graded on this system and will not affect the final score as it was designed in such a way that it requires manual assistance.

Question Type: Essay
Date Added: Thu 5th Aug 2021
Last Modified: N/A
QID#: 28,628,814

Correctly answered feedback

Part X of cell A allows substances to move within the cell.

Incorrectly answered feedback

Part X of cell A allows substances to move within the cell.

[Answers](#) | [Edit](#) | [Duplicate](#) | [Used In](#) | [Reorder](#)

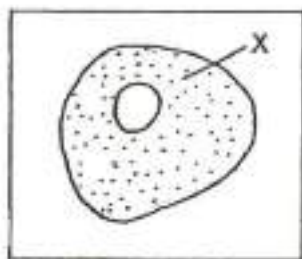
[Remove From Test](#)

Question 32

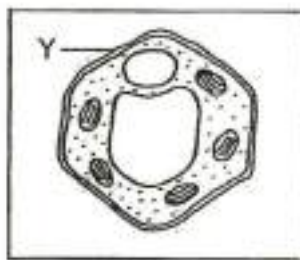
Primary 5 Science » Primary 5 Science (Term 2)

1 pt

The diagram below shows an animal cell and a plant cell.



cell A



cell B

Identify which cell is a plant cell and which is an animal cell.

Cell A: _____

Cell B: _____

Accepted answers:

- ✓ Animal Cell, Plant Cell
- ✓ Animal Cell Plant Cell
- ✓ Animal Cell , Plant Cell
- ✓ Animal Cell / Plant Cell
- ✓ Animal cell/ Plant cell
- ✓ Cell A: Animal Cell, Cell B: Plant Cell
- ✓ Cell A: animal cell / Cell B: plant cell
- ✓ Cell A: animal cell/Cell B: plant cell
- ✓ Cell A: animal cell/ Cell B: plant cell

Question Type: Free Text
Date Added: Thu 5th Aug 2021
Last Modified: N/A
QID#: 28,628,834

[Answers](#) | [Edit](#) | [Duplicate](#) | [Used In](#) | [Reorder](#)

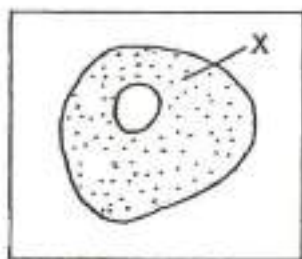
[Remove From Test](#)

Question 33

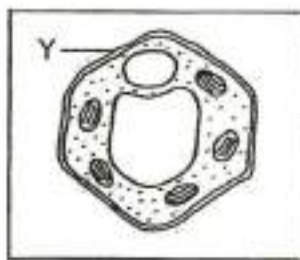
Primary 5 Science » Primary 5 Science (Term 2)

0 pts

The diagram below shows an animal cell and a plant cell.



cell A



cell B

What will happen to the cell if part Y of cell B is removed? Explain your answer.

This question is designed for extended answers that parent/ teacher will have to assign and guide child to attempt after the test has been completed.

Grading: This question type is not graded on this system and will not affect the final score as it was designed in such a way that it requires manual assistance.

Question Type: Essay
Date Added: Thu 5th Aug 2021
Last Modified: N/A
QID#: 28,628,816

Correctly answered feedback

Cell B would not have a fixed shape because part Y of cell B is the cell wall which gives the plant cells a fixed shape.

Incorrectly answered feedback

Cell B would not have a fixed shape because part Y of cell B is the cell wall which gives the plant cells a fixed shape.

[Answers](#) | [Edit](#) | [Duplicate](#) | [Used In](#) | [Reorder](#)

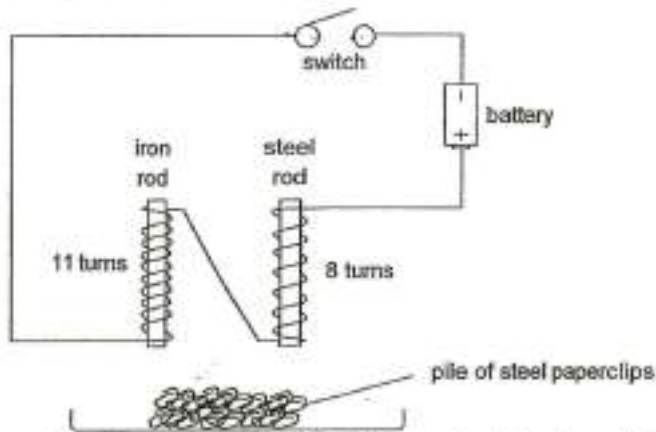
[Remove From Test](#)

Question 34

Primary 5 Science » Primary 5 Science (Term 2)

0 pts

Tom conducted an experiment as shown below.



The two rods were placed 5 cm above a pile of steel paperclips before the switch was closed. The number of paperclips attracted to each rod are shown below.

	Iron Rod	Steel Rod
1 st Trial	15	10
2 nd Trial	14	8
3 rd Trial	16	9

Tom's friend said that the experiments was not fair and they were not able to conclude which rod, iron or steel, was an electromagnet with a greater magnetic strength. Explain why Tom's friend is right. (2 marks)

This question is designed for extended answers that parent/ teacher will have to assign and guide child to attempt after the test has been completed.

Grading: This question type is not graded on this system and will not affect the final score as it was designed in such a way that it requires manual assistance.

Question Type: Essay
Date Added: Thu 5th Aug 2021
Last Modified: N/A
QID#: 28,628,819

Correctly answered feedback

There are two variables changes. The number of turns of coils around the rods and the different material of the rod.

Incorrectly answered feedback

There are two variables changes. The number of turns of coils around the rods and the different material of the rod.

[Answers](#) | [Edit](#) | [Duplicate](#) | [Used In](#) | [Reorder](#)

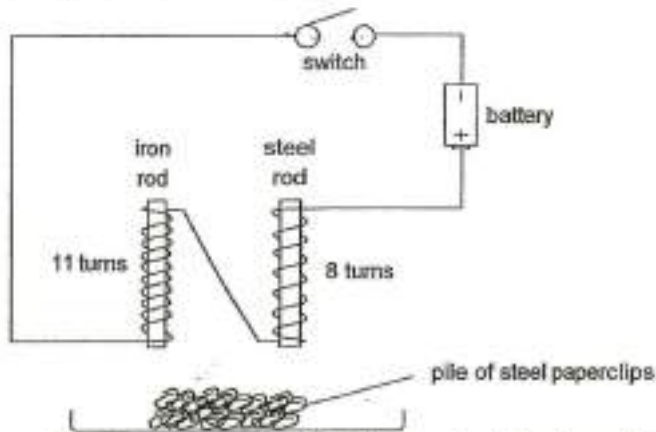
[Remove From Test](#)

Question 35

Primary 5 Science » Primary 5 Science (Term 2)

0 pts

Tom conducted an experiment as shown below.



The two rods were placed 5 cm above a pile of steel paperclips before the switch was closed. The number of paperclips attracted to each rod are shown below.

	Iron Rod	Steel Rod
1 st Trial	15	10
2 nd Trial	14	8
3 rd Trial	16	9

List one change Tom can make to the set-up such that he can conclude which rod is an electromagnet with a greater magnetic strength. (1 mark)

This question is designed for extended answers that parent/ teacher will have to assign and guide child to attempt after the test has been completed.

Grading: This question type is not graded on this system and will not affect the final score as it was designed in such a way that it requires manual assistance.

Question Type: Essay

Date Added: Thu 5th Aug 2021

Last Modified: N/A

QID#: 28,628,820

Correctly answered feedback

Make three more turns of wires for the steel rod.

Incorrectly answered feedback

Make three more turns of wires for the steel rod.

[Answers](#) | [Edit](#) | [Duplicate](#) | [Used In](#) | [Reorder](#)

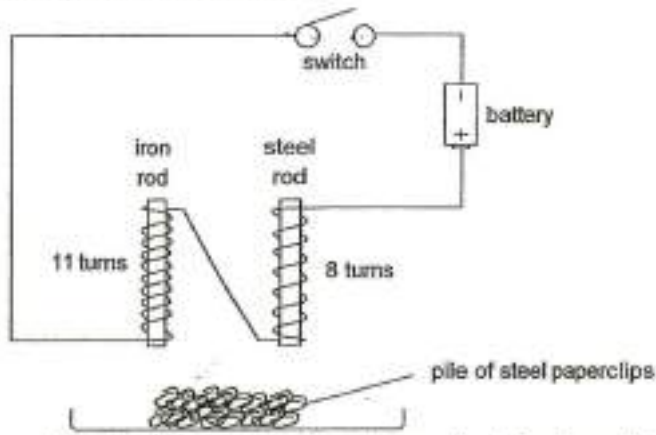
[Remove From Test](#)

Question 36

Primary 5 Science » Primary 5 Science (Term 2)

0 pts

Tom conducted an experiment as shown below.



The two rods were placed 5 cm above a pile of steel paperclips before the switch was closed. The number of paperclips attracted to each rod are shown below.

	Iron Rod	Steel Rod
1 st Trial	15	10
2 nd Trial	14	8
3 rd Trial	16	9

What would be observed if two more batteries are connected in series to the circuit above? (1 mark)

This question is designed for extended answers that parent/ teacher will have to assign and guide child to attempt after the test has been completed.

Grading: This question type is not graded on this system and will not affect the final score as it was designed in such a way that it requires manual assistance.

Question Type: Essay
Date Added: Thu 5th Aug 2021
Last Modified: N/A
QID#: 28,628,821

Correctly answered feedback

The iron rod and steel rod would attract more steel paperclips before the switch is closed.

Incorrectly answered feedback

The iron rod and steel rod would attract more steel paperclips before the switch is closed.

[Answers](#) | [Edit](#) | [Duplicate](#) | [Used In](#) | [Reorder](#)

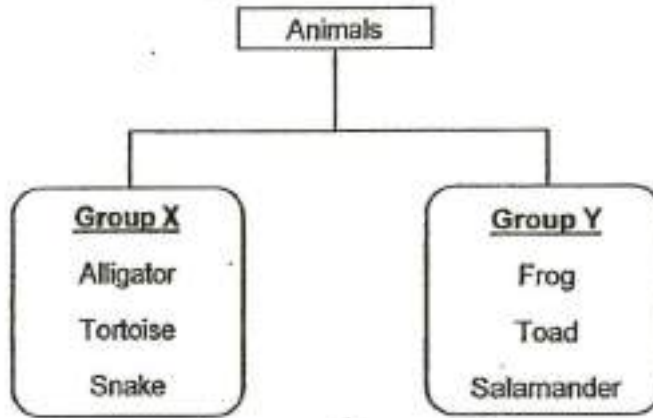
[Remove From Test](#)

Question 37

Primary 5 Science » Primary 5 Science (Term 2)

0 pts

Study the chart below carefully.



State one similarity and one difference between the characteristics of the animals in the two groups above.

Similarity: _____ (1)

Difference: _____ (1)

This question is designed for extended answers that parent/ teacher will have to assign and guide child to attempt after the test has been completed.

Grading: This question type is not graded on this system and will not affect the final score as it was designed in such a way that it requires manual assistance.

Question Type: Essay
Date Added: Thu 5th Aug 2021
Last Modified: N/A
QID#: 28,628,822

Correctly answered feedback

They both reproduce by laying eggs.
 The animals in Group X has scales as its outer covering while animals in Group Y has moist skin as its outer covering.

Incorrectly answered feedback

They both reproduce by laying eggs.
 The animals in Group X has scales as its outer covering while animals in Group Y has moist skin as its outer covering.

[Answers](#) | [Edit](#) | [Duplicate](#) | [Used In](#) | [Reorder](#)

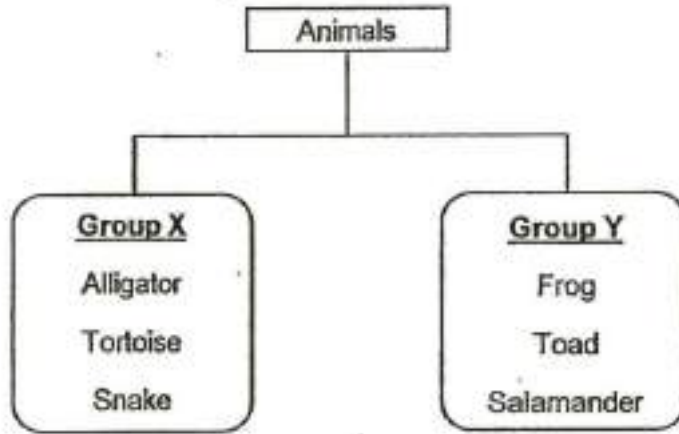
[Remove From Test](#)

Question 38

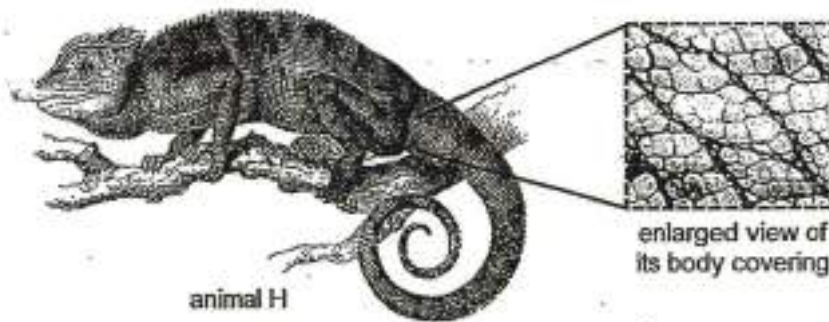
Primary 5 Science » Primary 5 Science (Term 2)

1 pt

Study the chart below carefully.



Study animal H below carefully.



Which group X or Y should animal H be placed under? Give a reason for your answer.. [1]

Accepted answers:

- ✓ Group X
- ✓ X

Question Type: Free Text
 Date Added: Thu 5th Aug 2021
 Last Modified: N/A
 QID#: 28,628,843

Correctly answered feedback

Group X. Animal H has scales as its outer covering and the animals in Group X has scales as their outer body covering too.

Incorrectly answered feedback

Group X. Animal H has scales as its outer covering and the animals in Group X has scales as their outer body covering too.

[Answers](#) |
 [Edit](#) |
 [Duplicate](#) |
 [Used In](#) |
 [Reorder](#)

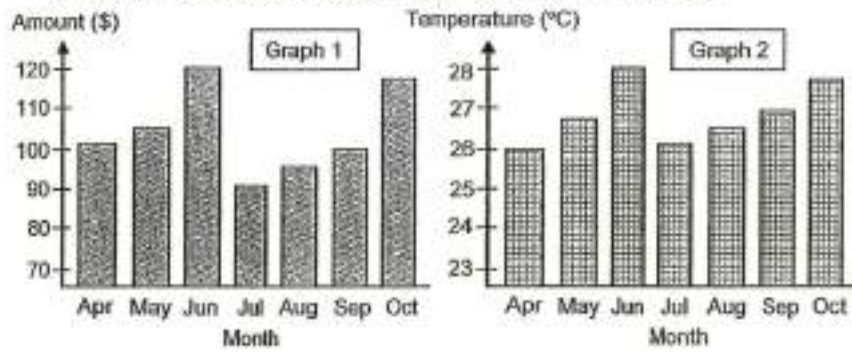
[Remove From Test](#)

Question 39

Primary 5 Science » Primary 5 Science (Term 2)

0 pts

Study the two graphs below. Graph 1 shows the average electricity bill for John's family. Graph 2 shows the average monthly temperature in Singapore.



John observed that there was a large increase in his electricity bill for the months of June and October. Based on the graphs, give a possible explanation for this increase. (2 marks)

This question is designed for extended answers that parent/ teacher will have to assign and guide child to attempt after the test has been completed.

Grading: This question type is not graded on this system and will not affect the final score as it was designed in such a way that it requires manual assistance.

Question Type: Essay
Date Added: Thu 5th Aug 2021
Last Modified: N/A
QID#: 28,628,824

Correctly answered feedback

As the temperature of June and October are the two highest, John's family might have use the fan and air condition more often and because of that they use more electricity and their electricity bill increases.

Incorrectly answered feedback

As the temperature of June and October are the two highest, John's family might have use the fan and air condition more often and because of that they use more electricity and their electricity bill increases.

[Answers](#) | [Edit](#) | [Duplicate](#) | [Used In](#) | [Reorder](#)

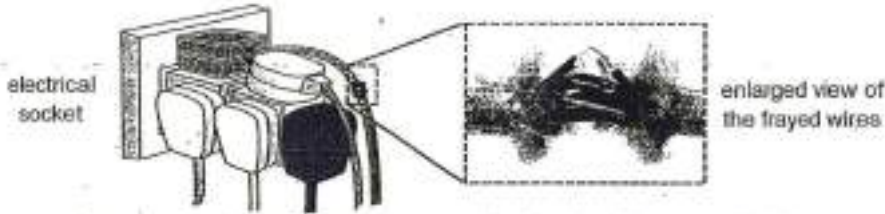
[Remove From Test](#)

Question 40

Primary 5 Science » Primary 5 Science (Term 2)

0 pts

The following situation was observed at an electrical socket in John's house.



Based on the above diagram, state two electrical safety issues and give a possible precaution John can take to address each issue. [2]

	Safety Issue	Possible Precaution(s) to be taken
(i)		
(ii)		

This question is designed for extended answers that parent/ teacher will have to assign and guide child to attempt after the test has been completed.

Grading: This question type is not graded on this system and will not affect the final score as it was designed in such a way that it requires manual assistance.

Question Type: Essay
 Date Added: Thu 5th Aug 2021
 Last Modified: N/A
 QID#: 28,628,826

Correctly answered feedback

(i) Too many plugs connected to the electrical socket	Remove all the plugs connected to the electrical socket and only have one plug per electrical socket.
(ii) The frayed wires are exposed.	Replace the wire.

Incorrectly answered feedback

(i) Too many plugs connected to the electrical socket	Remove all the plugs connected to the electrical socket and only have one plug per electrical socket.
(ii) The frayed wires are exposed.	Replace the wire.

[Answers](#) |
 [Edit](#) |
 [Duplicate](#) |
 [Used In](#) |
 [Reorder](#)

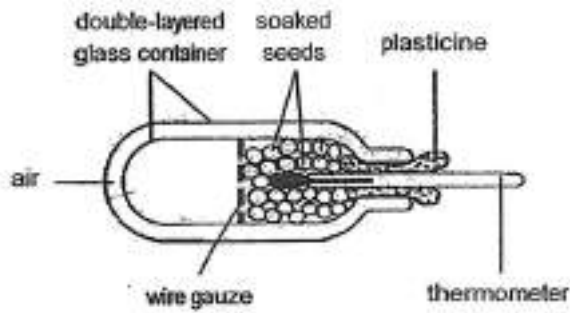
[Remove From Test](#)

Question 41

Primary 5 Science » Primary 5 Science (Term 2)

0 pts

Zhi Hui wanted to find out if germinating seeds produced heat. He soaked some seeds in water before placing them in a glass container as shown.



He measured the temperature in the container from time to time until all the seeds had germinated.

Give a reason why Zhi Hui did not fill the container completely with seeds.

This question is designed for extended answers that parent/ teacher will have to assign and guide child to attempt after the test has been completed.

Grading: This question type is not graded on this system and will not affect the final score as it was designed in such a way that it requires manual assistance.

Question Type: Essay
 Date Added: Thu 5th Aug 2021
 Last Modified: N/A
 QID#: 28,628,825

Correctly answered feedback

The space will have air inside the glass container for the seeds to germinate.

Incorrectly answered feedback

The space will have air inside the glass container for the seeds to germinate.

[Answers](#) | [Edit](#) | [Duplicate](#) | [Used In](#) | [Reorder](#)

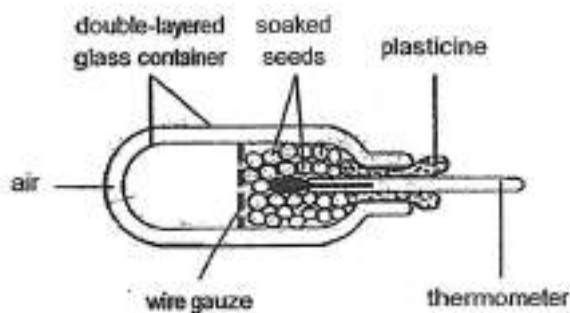
[Remove From Test](#)

Question 42

Primary 5 Science » Primary 5 Science (Term 2)

0 pts

Zhi Hui wanted to find out if germinating seeds produced heat. He soaked some seeds in water before placing them in a glass container as shown.



He measured the temperature in the container from time to time until all the seeds had germinated.

As the seeds were germinating, the temperature in the glass container increased. What can Zhi Hui conclude from this observation?

This question is designed for extended answers that parent/ teacher will have to assign and guide child to attempt after the test has been completed.

Grading: This question type is not graded on this system and will not affect the final score as it was designed in such a way that it requires manual assistance.

Question Type: Essay
Date Added: Thu 5th Aug 2021
Last Modified: N/A
QID#: 28,628,829

Correctly answered feedback

When the seeds are germinating, they produce heat and the glass container gains heat from the seeds.

Incorrectly answered feedback

When the seeds are germinating, they produce heat and the glass container gains heat from the seeds.

[Answers](#) | [Edit](#) | [Duplicate](#) | [Used In](#) | [Reorder](#)

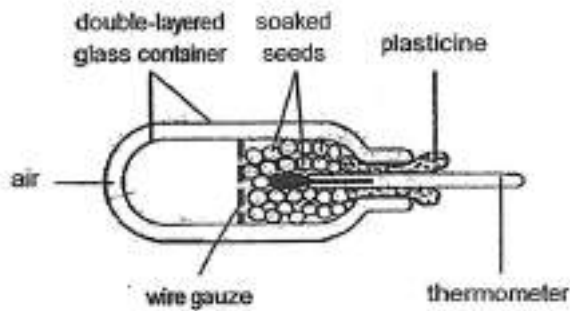
[Remove From Test](#)

Question 43

Primary 5 Science » Primary 5 Science (Term 2)

0 pts

Zhi Hui wanted to find out if germinating seeds produced heat. He soaked some seeds in water before placing them in a glass container as shown.



He measured the temperature in the container from time to time until all the seeds had germinated.

Explain how using a double-layered glass container with air in between helps to make the results of the experiment more reliable.

This question is designed for extended answers that parent/ teacher will have to assign and guide child to attempt after the test has been completed.

Grading: This question type is not graded on this system and will not affect the final score as it was designed in such a way that it requires manual assistance.

Question Type: Essay
Date Added: Thu 5th Aug 2021
Last Modified: N/A
QID#: 28,628,827

Correctly answered feedback

Air is a poor conductor of heat. The temperature measured inside the glass container is solely due to the heat produced by the germinating seeds.

Incorrectly answered feedback

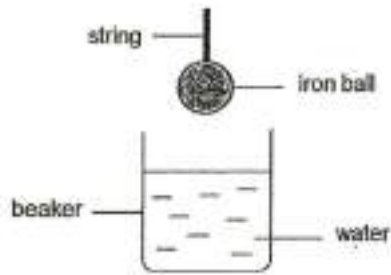
Air is a poor conductor of heat. The temperature measured inside the glass container is solely due to the heat produced by the germinating seeds.

Question 44

Primary 5 Science » Primary 5 Science (Term 2)

0 pts

Kim gently lowered an iron ball into a beaker of water as shown in the diagram below.



What change to the water level will Kim observe when the iron ball is fully lowered into the beaker of water? (1 mark)

This question is designed for extended answers that parent/ teacher will have to assign and guide child to attempt after the test has been completed.

Grading: This question type is not graded on this system and will not affect the final score as it was designed in such a way that it requires manual assistance.

Question Type: Essay
Date Added: Thu 5th Aug 2021
Last Modified: N/A
QID#: 28,628,830

Correctly answered feedback

The water level will be rise.

Incorrectly answered feedback

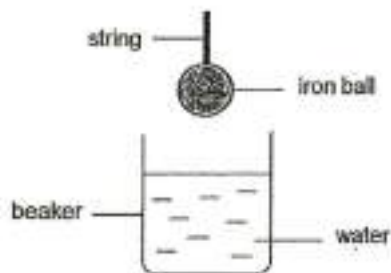
The water level will be rise.

Question 45

Primary 5 Science » Primary 5 Science (Term 2)

0 pts

Kim gently lowered an iron ball into a beaker of water as shown in the diagram below.



Kim then replaced the iron ball with a lighter glass ball of the same size and repeated the experiment.

Will the water level be lower, higher or remain the same as in her previous experiment? Explain your answer. (2 marks)

This question is designed for extended answers that parent/ teacher will have to assign and guide child to attempt after the test has been completed.

Grading: This question type is not graded on this system and will not affect the final score as it was designed in such a way that it requires manual assistance.

Question Type: Essay
Date Added: Thu 5th Aug 2021
Last Modified: N/A
QID#: 28,628,831

Correctly answered feedback

Same as before. The balls are the same size therefore it will occupy the same amount of space in the water.

Incorrectly answered feedback

Same as before. The balls are the same size therefore it will occupy the same amount of space in the water.

[Answers](#) | [Edit](#) | [Duplicate](#) | [Used In](#) | [Reorder](#)

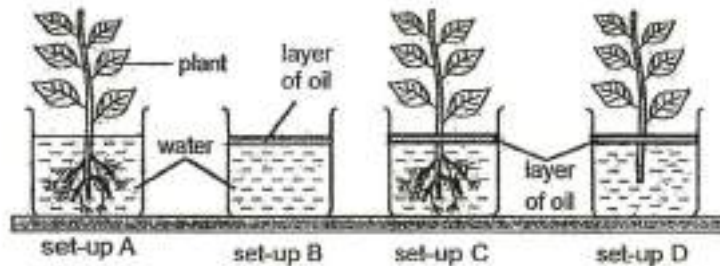
[Remove From Test](#)

Question 46

Primary 5 Science » Primary 5 Science (Term 2)

1 pt

Laura conducted an experiment in a classroom as shown below. She wanted to find out if roots like in water.



Which pair of set-ups should she use to make a fair comparison? Explain your answer.

Accepted answers:

- ✓ C and D
- ✓ Set-up C and D
- ✓ Set-up C and Set-up D
- ✓ D and C
- ✓ Set-up D and Set-up C
- ✓ Set-up D and C

Question Type: Free Text
Date Added: Thu 5th Aug 2021
Last Modified: N/A
QID#: 28,628,833

Correctly answered feedback

C and D. All other variables are the same and the only changed variable is the presence of roots.

Incorrectly answered feedback

C and D. All other variables are the same and the only changed variable is the presence of roots.

[Answers](#) |
 [Edit](#) |
 [Duplicate](#) |
 [Used In](#) |
 [Reorder](#)

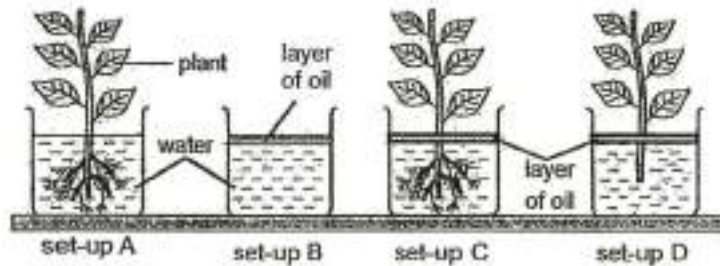
[Remove From Test](#)

Question 47

Primary 5 Science » Primary 5 Science (Term 2)

0 pts

Laura conducted an experiment in a classroom as shown below. She wanted to find out if roots take in water.



Laura wanted to conduct another experiment to find out if the number of leaves affect the amount of water absorbed by the roots. he decided to use set-ups A and C to conduct the experiment.

What is the purpose of the layer of oil in this experiment? (1 mark)

This question is designed for extended answers that parent/ teacher will have to assign and guide child to attempt after the test has been completed.

Grading: This question type is not graded on this system and will not affect the final score as it was designed in such a way that it requires manual assistance.

Question Type: Essay
Date Added: Thu 5th Aug 2021
Last Modified: N/A
QID#: 28,628,818

Correctly answered feedback

To ensure that any decrease in the water in the beaker is solely due to the presence of leaves and not evaporation.

Incorrectly answered feedback

To ensure that any decrease in the water in the beaker is solely due to the presence of leaves and not evaporation.

[Answers](#) |
 [Edit](#) |
 [Duplicate](#) |
 [Used In](#) |
 [Reorder](#)

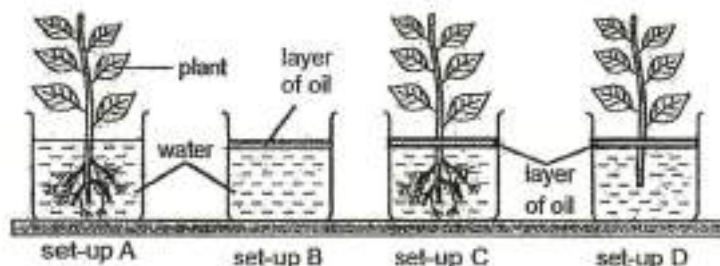
[Remove From Test](#)

Question 48

Primary 5 Science » Primary 5 Science (Term 2)

0 pts

Laura conducted an experiment in a classroom as shown below. She wanted to find out if roots take in water.



Laura wanted to conduct another experiment to find out if the number of leaves affect the amount of water absorbed by the roots. he decided to use set-ups A and C to conduct the experiment.

Suggest two changes that Laura should do to set-up A and C to make the experiment a fair test. (2 mark)

This question is designed for extended answers that parent/ teacher will have to assign and guide child to attempt after the test has been completed.

Grading: This question type is not graded on this system and will not affect the final score as it was designed in such a way that it requires manual assistance.

Question Type: Essay
Date Added: Thu 5th Aug 2021
Last Modified: N/A
QID#: 28,628,815

Correctly answered feedback

Add the same amount of oil to Set-up A. Pluck out some of the leaves from one of the set-ups.

Incorrectly answered feedback

Add the same amount of oil to Set-up A. Pluck out some of the leaves from one of the set-ups.

[Answers](#) | [Edit](#) | [Duplicate](#) | [Used In](#) | [Reorder](#)

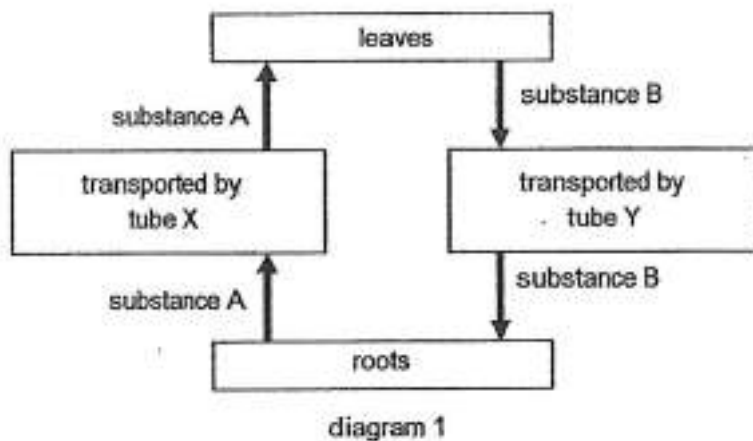
[Remove From Test](#)

Question 49

Primary 5 Science » Primary 5 Science (Term 2)

0.5 pts

Diagram 1 below shows the movement of substances in a plant.



Identify tube X.

Accepted answers:

- ✓ Water-carrying tube
- ✓ Water - carrying tube

Question Type: Free Text
Date Added: Thu 5th Aug 2021
Last Modified: N/A
QID#: 28,628,835

[Answers](#) | [Edit](#) | [Duplicate](#) | [Used In](#) | [Reorder](#)

[Remove From Test](#)

Question 50

Primary 5 Science » Primary 5 Science (Term 2)

0 pts

Diagram 1 below shows the movement of substances in a plant.

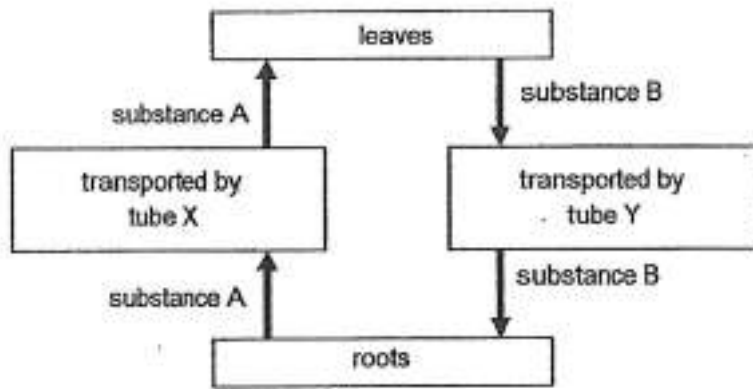


diagram 1

Diagram 2 below shows the circulatory system of organism K.

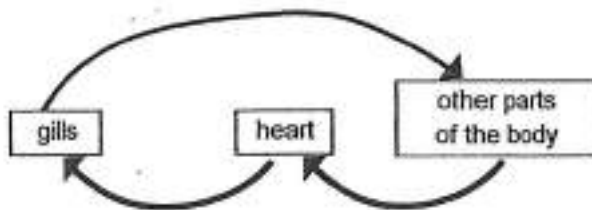


diagram 2

Comparing diagrams 1 and 2, state one difference between the direction of transport system of the plant and the circulatory system of organism K.

This question is designed for extended answers that parent/ teacher will have to assign and guide child to attempt after the test has been completed.

Grading: This question type is not graded on this system and will not affect the final score as it was designed in such a way that it requires manual assistance.

Question Type: Essay
Date Added: Thu 5th Aug 2021
Last Modified: N/A
QID#: 28,628,823

Correctly answered feedback

Plant transport system flows in one direction while the circulatory system of organism K is in a circular direction.

Incorrectly answered feedback

Plant transport system flows in one direction while the circulatory system of organism K is in a circular direction.

[Answers](#) | [Edit](#) | [Duplicate](#) | [Used In](#) | [Reorder](#)

[Remove From Test](#)

Question 51

Primary 5 Science » Primary 5 Science (Term 2)

0.5 pts

Diagram 1 below shows the movement of substances in a plant.

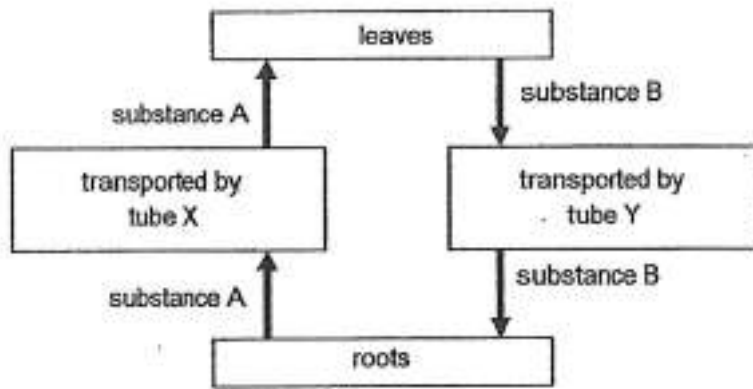


diagram 1

Identify tube Y.

Accepted answers:

- ✓ Food-carrying tube
- ✓ Food - Carrying Tube

Question Type: Free Text
 Date Added: Thu 5th Aug 2021
 Last Modified: N/A
 QID#: 28,628,836

[Answers](#) | [Edit](#) | [Duplicate](#) | [Used In](#) | [Reorder](#)

[Remove From Test](#)

Question 52

Primary 5 Science » Primary 5 Science (Term 2)

0.5 pts

Diagram 1 below shows the movement of substances in a plant.

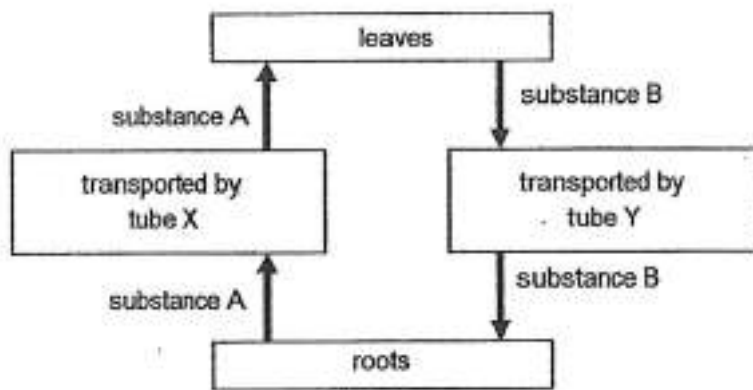


diagram 1

Identify substance B.

Accepted answers:

- ✓ Food

Question Type: Free Text
Date Added: Thu 5th Aug 2021
Last Modified: N/A
QID#: 28,628,841

[Answers](#) | [Edit](#) | [Duplicate](#) | [Used In](#) | [Reorder](#)

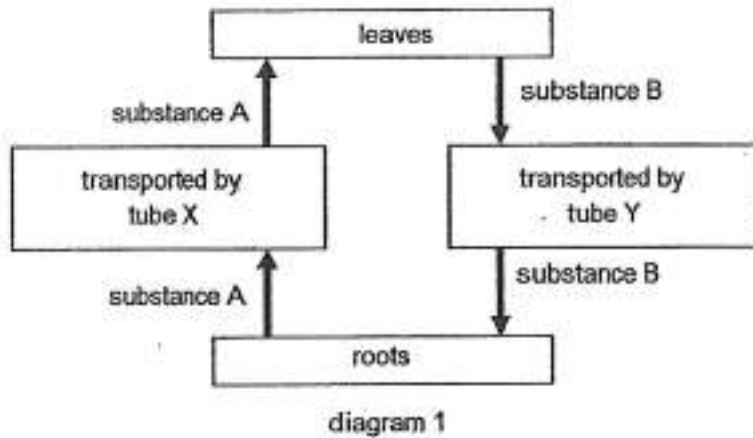
[Remove From Test](#)

Question 53

Primary 5 Science » Primary 5 Science (Term 2)

0.5 pts

Diagram 1 below shows the movement of substances in a plant.



Identify substance A.

Accepted answers:

- ✓ Water and minerals
- ✓ Minerals and water

Question Type: Free Text
Date Added: Thu 5th Aug 2021
Last Modified: N/A
QID#: 28,628,837

[Answers](#) | [Edit](#) | [Duplicate](#) | [Used In](#) | [Reorder](#)

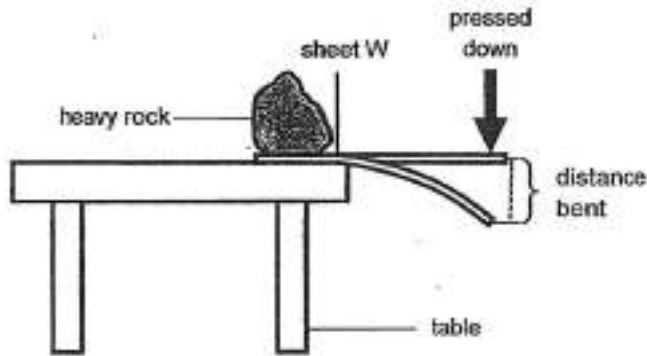
[Remove From Test](#)

Question 54

Primary 5 Science » Primary 5 Science (Term 2)

1 pt

Wei Ling carried out an experiment on four sheets W, X, Y and Z each made of a different material. She placed sheet W on the side of a table and placed a heavy rock on it to hold it down firmly. Then she pressed the sheet down slowly until it broke. She repeated the experiment using sheets X, Y and Z.



She recorded the results in the table below.

Sheet	Greatest distance bent before breaking (cm)
W	7
X	1
Y	5
Z	2

Based on the results of the experiment, which one of the materials W, X, Y or Z should Wei Ling use to make a pair of chopsticks? Give a reason for your answer.

Accepted answers:

- ✓ Material X
- ✓ x

Question Type: Free Text
 Date Added: Thu 5th Aug 2021
 Last Modified: N/A
 QID#: 28,628,845

Correctly answered feedback

Material X. It bends the least distance therefore it is the stiffest so that it will be able to pick up food.

Incorrectly answered feedback

Material X. It bends the least distance therefore it is the stiffest so that it will be able to pick up food.

[Answers](#) | [Edit](#) | [Duplicate](#) | [Used In](#) | [Reorder](#)

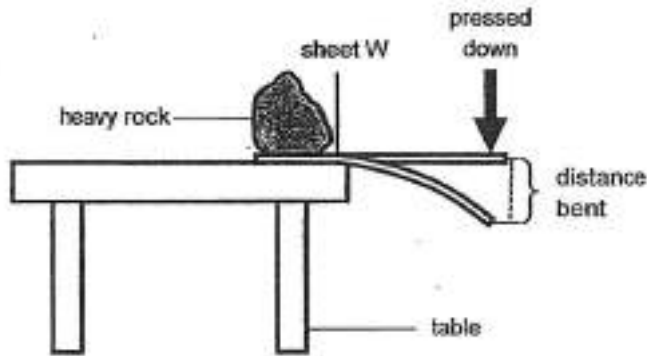
[Remove From Test](#)

Question 55

Primary 5 Science » Primary 5 Science (Term 2)

1 pt

Wei Ling carried out an experiment on four sheets W, X, Y and Z each made of a different material. She placed sheet W on the side of a table and placed a heavy rock on it to hold it down firmly. Then she pressed the sheet down slowly until it broke. She repeated the experiment using sheets X, Y and Z.



She recorded the results in the table below.

Sheet	Greatest distance bent before breaking (cm)
W	7
X	1
Y	5
Z	2

State the property of material that Wei Ling was testing.

Accepted answers:

✓ Flexibility

Question Type: Free Text
Date Added: Thu 5th Aug 2021
Last Modified: N/A
QID#: 28,628,838

[Answers](#) | [Edit](#) | [Duplicate](#) | [Used In](#) | [Reorder](#)

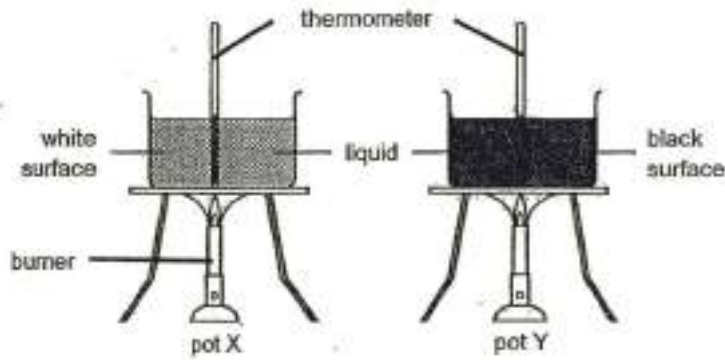
[Remove From Test](#)

Question 56

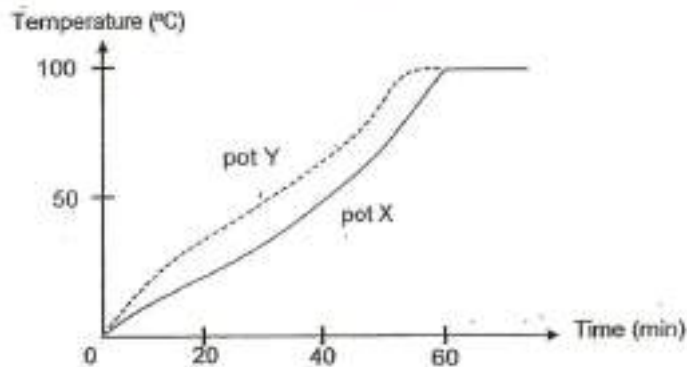
Primary 5 Science » Primary 5 Science (Term 2)

2 pts

Ken conducted an experiment using two identical pots as shown below. Pot Y has a black surface while pot X has a white surface. Both pots were filled with 200 cm³ of water at 0 °C and heated with 2 similar burners.



The temperatures of water in both pots X and Y were recorded every minute for some time. The graph below shows the results of Ken's experiment.



Based on the results above, which pot X or Y can be used to cook soup in a shorter time? Explain your choice.

Accepted answers:

- ✓ Pot Y
- ✓ Y

Question Type: Free Text
Date Added: Thu 5th Aug 2021
Last Modified: N/A
QID#: 28,628,839

Correctly answered feedback

Pot Y. The temperature of water increase faster than Pot X. This shows that the water in Pot Y gains heat from the burner faster. Therefore it will cook the soup faster.

Incorrectly answered feedback

Pot Y. The temperature of water increase faster than Pot X. This shows that the water in Pot Y gains heat from the burner faster. Therefore it will cook the soup faster.

[Answers](#) | [Edit](#) | [Duplicate](#) | [Used In](#) | [Reorder](#)

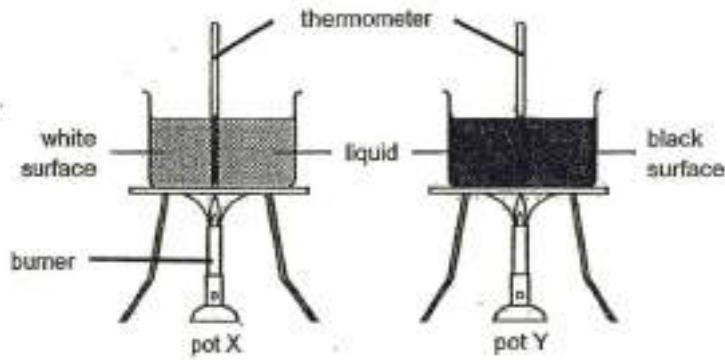
[Remove From Test](#)

Question 57

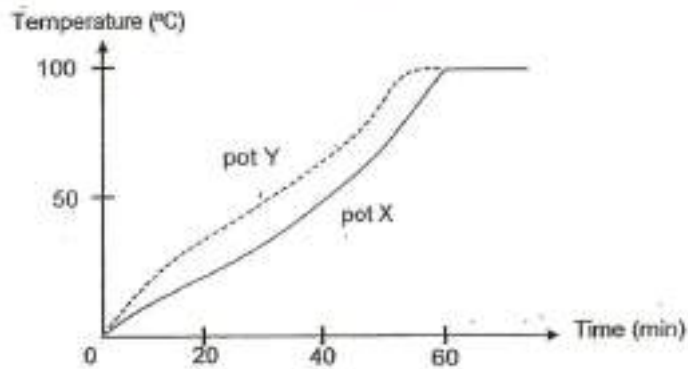
Primary 5 Science » Primary 5 Science (Term 2)

1 pt

Ken conducted an experiment using two identical pots as shown below. Pot Y has a black surface while pot X has a white surface. Both pots were filled with 200 cm³ of water at 0 °C and heated with 2 similar burners.



The temperatures of water in both pots X and Y were recorded every minute for some time. The graph below shows the results of Ken's experiment.



What will the temperature of the water be in both pots at the 65th minute?

Accepted answers:

- ✓ 100 degree Celsius
- ✓ 100

Question Type: Free Text
 Date Added: Thu 5th Aug 2021
 Last Modified: N/A
 QID#: 28,628,840

Correctly answered feedback

100°C
 100°C

Incorrectly answered feedback

100°C
 100°C

[Answers](#) |
 [Edit](#) |
 [Duplicate](#) |
 [Used In](#) |
 [Reorder](#)

[Remove From Test](#)

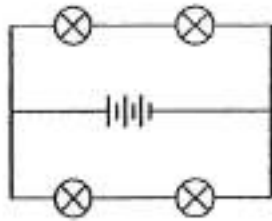
Question 58

Primary 5 Science » Primary 5 Science (Term 2)

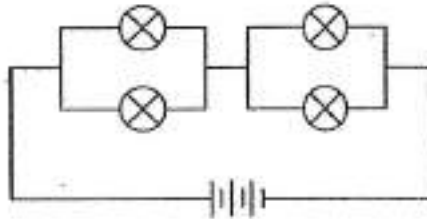
2 pts

Study the circuits below. In the given circuits, all the bulbs were lit.

circuit X



circuit Y



In the table below, write down the number of bulbs that would remain lit when one of the bulbs in each circuit is blown. [2]

	Circuit X	Circuit Y
Number of bulbs remaining lit		

Accepted answers:

- ✓ 2 bulbs, 3 bulbs
- ✓ 2 bulbs 3 bulbs
- ✓ 2, 3
- ✓ 2-Mar
- ✓ 2 , 3
- ✓ 2 bulbs , 3 bulbs
- ✓ 2 Bulbs / 3 Bulbs
- ✓ 2 Bulbs/3 Bulbs

Question Type: Free Text
 Date Added: Thu 5th Aug 2021
 Last Modified: N/A
 QID#: 28,628,842

[Answers](#) |
 [Edit](#) |
 [Duplicate](#) |
 [Used In](#) |
 [Reorder](#)

[Remove From Test](#)

Question 59

Primary 5 Science » Primary 5 Science (Term 2)

2 pts

The diagram below shows a dog house that is in the garden.



Based on the results of Ken's experiment, should Ken paint the roof of the dog house black or white if he wants to keep his dog cooler on a sunny day? Explain your answer. [2]

Accepted answers:

✓ White

Question Type: Free Text
Date Added: Thu 5th Aug 2021
Last Modified: N/A
QID#: 28,628,844

Correctly answered feedback

White. White surface gained lesser heat from the surroundings so the temperature in the dog house will be lower and the dog will feel cooler.

Incorrectly answered feedback

White. White surface gained lesser heat from the surroundings so the temperature in the dog house will be lower and the dog will feel cooler.

[Answers](#) | [Edit](#) | [Duplicate](#) | [Used In](#) | [Reorder](#)

[Remove From Test](#)

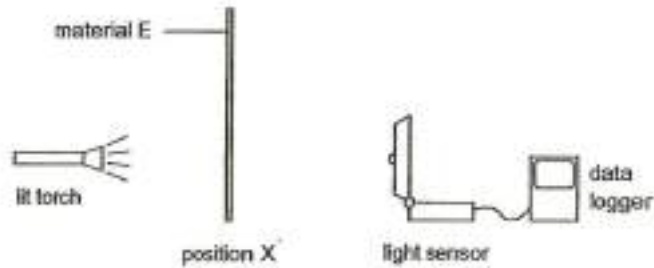
Question 60

Primary 5 Science » Primary 5 Science (Term 2)

1 pt

Rina wanted to find out which material is the most suitable for making a bottle to store essential oils. Essential oils, usually used for scenting rooms, are best stored away from direct light to prevent a loss of quality.

She placed material E at position X and shone the torch on it as shown below. A light sensor attached to a data logger was used to record the amount of light that passed through the material.



She repeated the experiment with materials F, G and H. For each material, she conducted the experiment three times and recorded the results in the table below.

Material	Thickness (cm)	Average amount of light detected (units)
E	1	52
F	1	43
G	1	38
H	1	15

State the changed variable in this experiment.

Accepted answers:

- ✓ The type of material
- ✓ Type of material
- ✓ Material type

Question Type: Free Text

Date Added: Thu 5th Aug 2021

Last Modified: N/A

QID#: 28,628,846

[Answers](#) | [Edit](#) | [Duplicate](#) | [Used In](#) | [Reorder](#)

[Remove From Test](#)

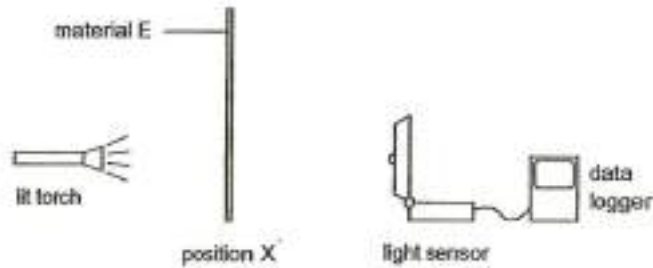
Question 61

Primary 5 Science » Primary 5 Science (Term 2)

0 pts

Rina wanted to find out which material is the most suitable for making a bottle to store essential oils. Essential oils, usually used for scenting rooms, are best stored away from direct light to prevent a loss of quality.

She placed material E at position X and shone the torch on it as shown below. A light sensor attached to a data logger was used to record the amount of light that passed through the material.



She repeated the experiment with materials F, G and H. For each material, she conducted the experiment three times and recorded the results in the table below.

Material	Thickness (cm)	Average amount of light detected (units)
E	1	52
F	1	43
G	1	38
H	1	15

Give a reason why Rina repeated the experiment three times of each type of material. (1 mark)

This question is designed for extended answers that parent/ teacher will have to assign and guide child to attempt after the test has been completed.

Grading: This question type is not graded on this system and will not affect the final score as it was designed in such a way that it requires manual assistance.

Question Type: Essay
Date Added: Thu 5th Aug 2021
Last Modified: N/A
QID#: 28,628,828

Correctly answered feedback

To ensure her results are reliable.

Incorrectly answered feedback

To ensure her results are reliable.

[Answers](#) | [Edit](#) | [Duplicate](#) | [Used In](#) | [Reorder](#)

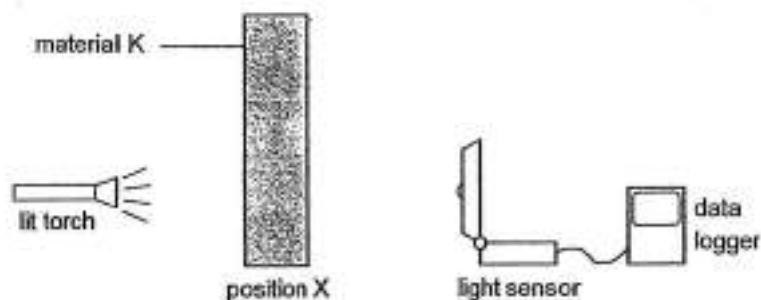
[Remove From Test](#)

Question 62

Primary 5 Science » Primary 5 Science (Term 2)

0 pts

Rina conducted a similar experiment using different thickness of material K.



She recorded the results in the table below.

Thickness (cm)	Average amount of light detected (units)
5	42
6	32
7	25
8	8

What can she conclude from the experiment? (1 mark)

This question is designed for extended answers that parent/ teacher will have to assign and guide child to attempt after the test has been completed.

Grading: This question type is not graded on this system and will not affect the final score as it was designed in such a way that it requires manual assistance.

Question Type: Essay
Date Added: Thu 5th Aug 2021
Last Modified: N/A
QID#: 28,628,812

Correctly answered feedback

The thicker material K the lesser average amount the light detected by the light sensor connected to the data logger.

Incorrectly answered feedback

The thicker material K the lesser average amount the light detected by the light sensor connected to the data logger.

[Answers](#) | [Edit](#) | [Duplicate](#) | [Used In](#) | [Reorder](#)

[Remove From Test](#)

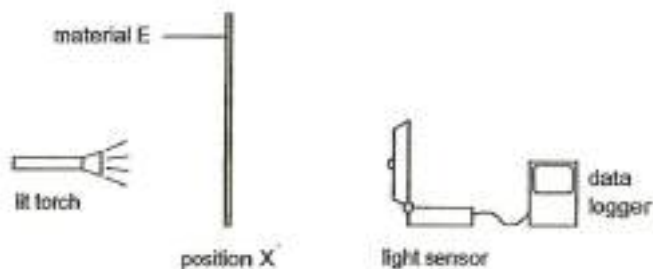
Question 63

Primary 5 Science » Primary 5 Science (Term 2)

1 pt

Rina wanted to find out which material is the most suitable for making a bottle to store essential oils. Essential oils, usually used for scenting rooms, are best stored away from direct light to prevent a loss of quality.

She placed material E at position X and shone the torch on it as shown below. A light sensor attached to a data logger was used to record the amount of light that passed through the material.



She repeated the experiment with materials F, G and H. For each material, she conducted the experiment three times and recorded the results in the table below.

Material	Thickness (cm)	Average amount of light detected (units)
E	1	52
F	1	43
G	1	38
H	1	15

Based on the results in the table, which material E, F, G or H is most suitable for making bottles used for storing essential oils? Give a reason for your answer.

Accepted answers:

- ✓ Material H
- ✓ H

Question Type: Free Text
 Date Added: Thu 5th Aug 2021
 Last Modified: N/A
 QID#: 28,628,832

Correctly answered feedback

Materials H. t allows the least amount of light to pass through so that the quality of the oil will not be affected.

Incorrectly answered feedback

Materials H. t allows the least amount of light to pass through so that the quality of the oil will not be affected.

[Answers](#) | [Edit](#) | [Duplicate](#) | [Used In](#) | [Reorder](#)

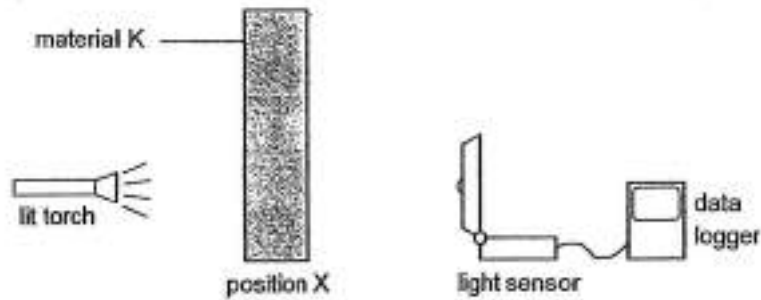
[Remove From Test](#)

Question 64

Primary 5 Science » Primary 5 Science (Term 2)

0 pts

Rina conducted a similar experiment using different thickness of material K.



She recorded the results in the table below.

Thickness (cm)	Average amount of light detected (units)
5	42
6	32
7	25
8	8

Write down a suitable aim for the experiment. (1 mark)

This question is designed for extended answers that parent/ teacher will have to assign and guide child to attempt after the test has been completed.

Grading: This question type is not graded on this system and will not affect the final score as it was designed in such a way that it requires manual assistance.

Question Type: Essay
Date Added: Thu 5th Aug 2021
Last Modified: N/A
QID#: 28,628,811

Correctly answered feedback

Rina wants to find out if the thickness of material K affects the average amount of light detected by the light sensor connected to the data logger.

Incorrectly answered feedback

Rina wants to find out if the thickness of material K affects the average amount of light detected by the light sensor connected to the data logger.

[Answers](#) | [Edit](#) | [Duplicate](#) | [Used In](#) | [Reorder](#)

[Remove From Test](#)